

# **Telescopic Gate System Installation Manual**

## **for 3 Gates**

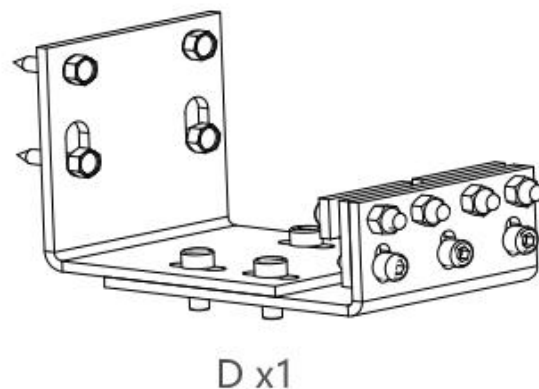
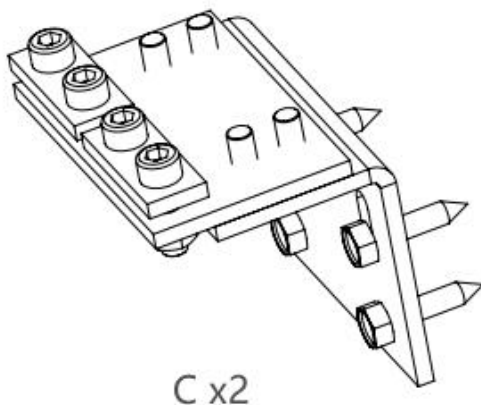
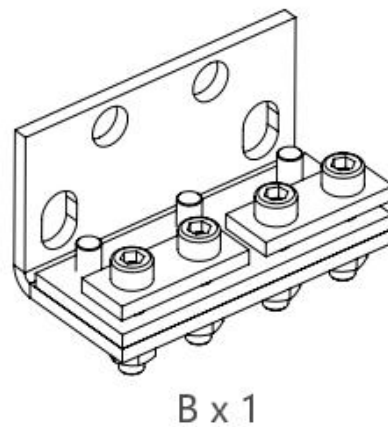
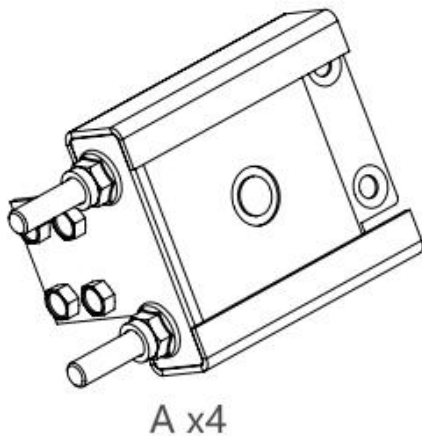


This installation manual should be considered as a guide only, it cannot account for many of the installation variables which may affect part placements, measurements, sizing etc. Please always use your own discretion as an installer to double-check, temporarily fix and test prior to final fitting.

## 1. Specifications

Max. Gate Width	5 meters
Max. Driveway Width	15 meters
Ma.x Gate Weight	250KG for single gate
Cable	10m 4mm Stainless Steel x2

## 2. Installation Overview



Step 1. Install the accessory A on the left and right sides of the Gate 1 with screws as shown in the diagram 1&2.

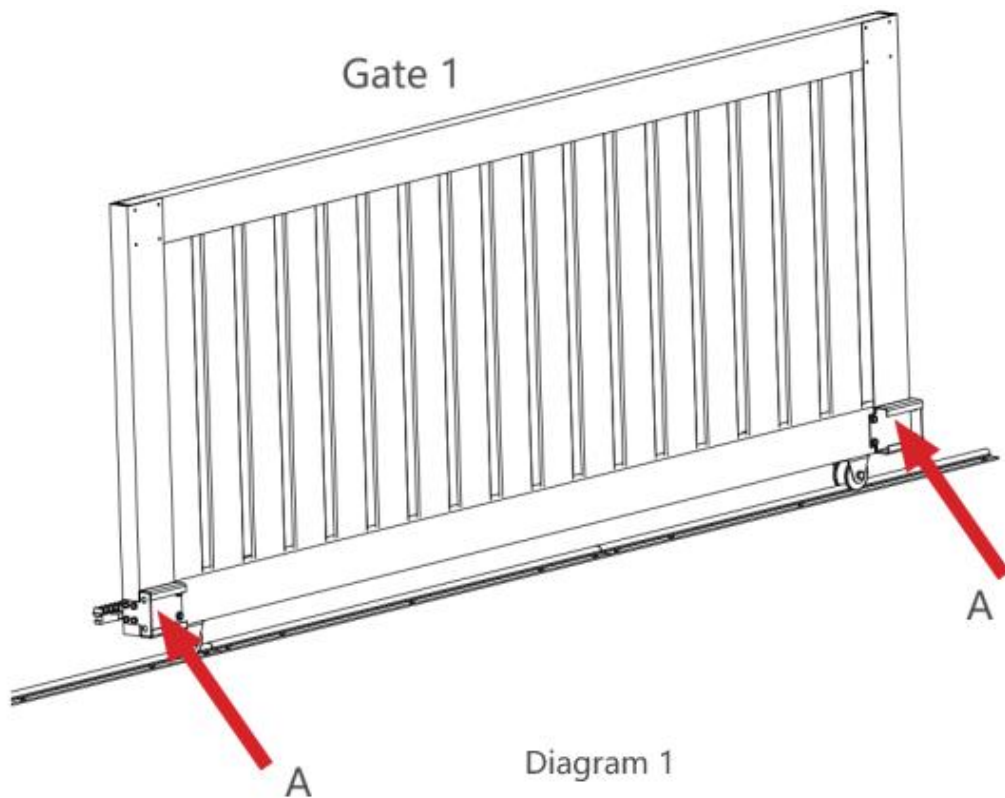


Diagram 1

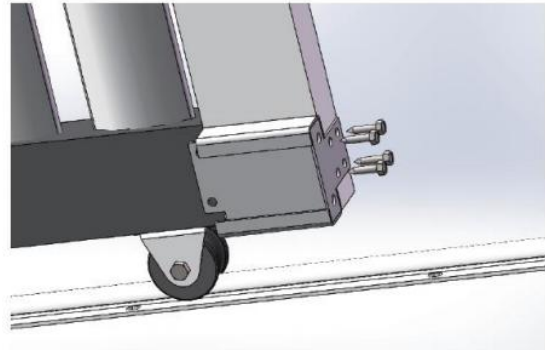
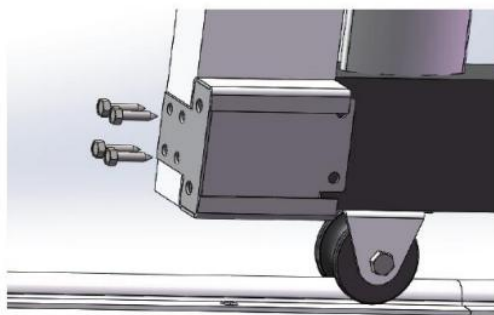


Diagram 2

Step 2. Insert the steel wire and wheel into the shaft of the telescopic gate, and then use the E-type clamp spring to clamp into the clamping groove on the shaft, as following diagram 3&4.

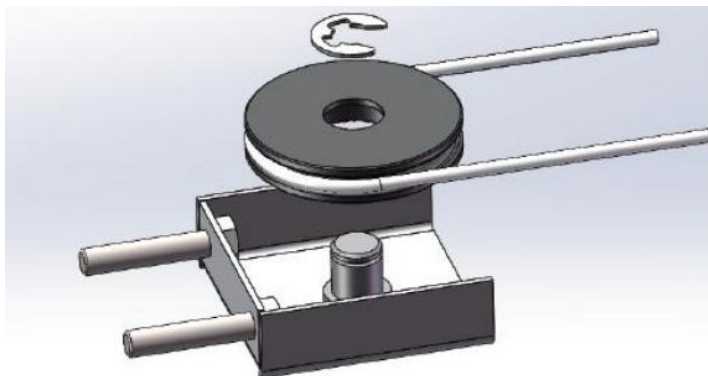
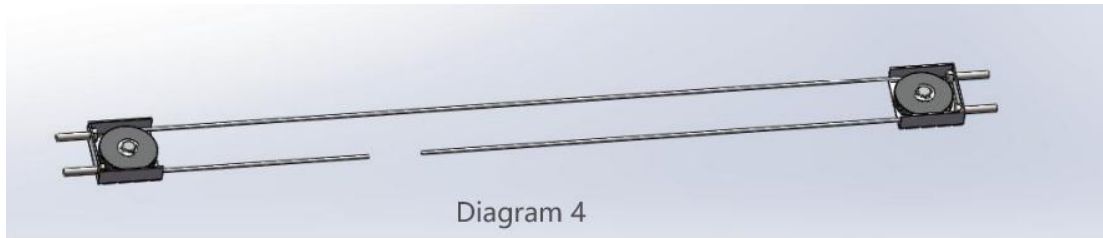
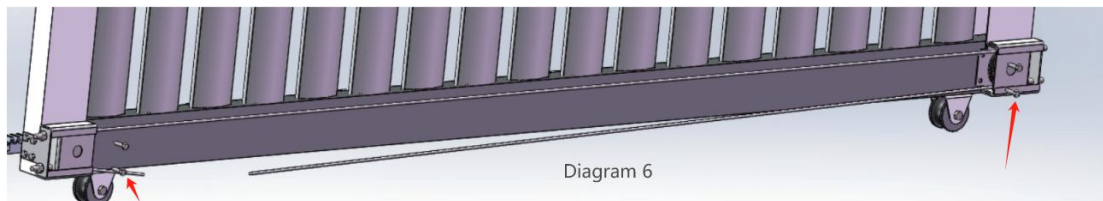
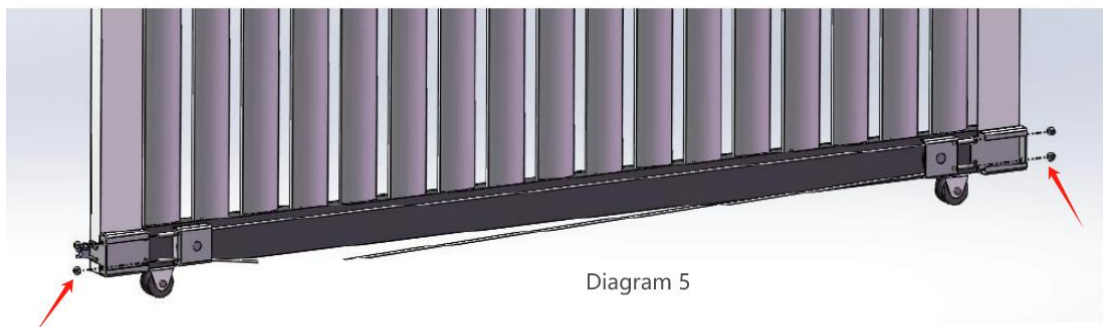


Diagram 3



Step 3. Install the wheel assembly fittings into the guide groove (left and right) of the fixed expansion door fittings for the first door, and pre-tighten with the nut, as following diagram 5&6.



Step 4. Accessory B is fixed to the ground with expansion bolts, and the two ends of the wire are locked with pressure plates as shown in the diagram 7&8&9.

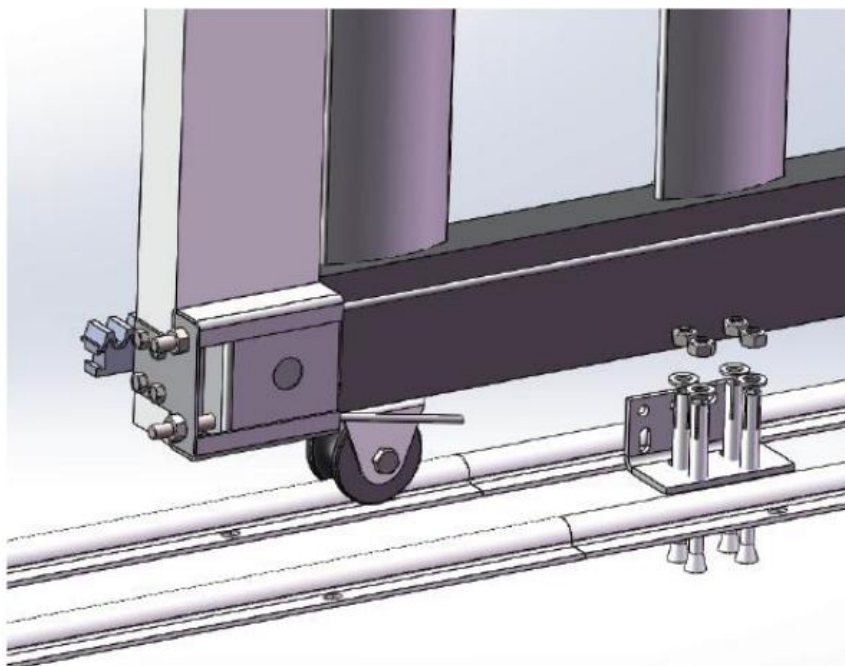
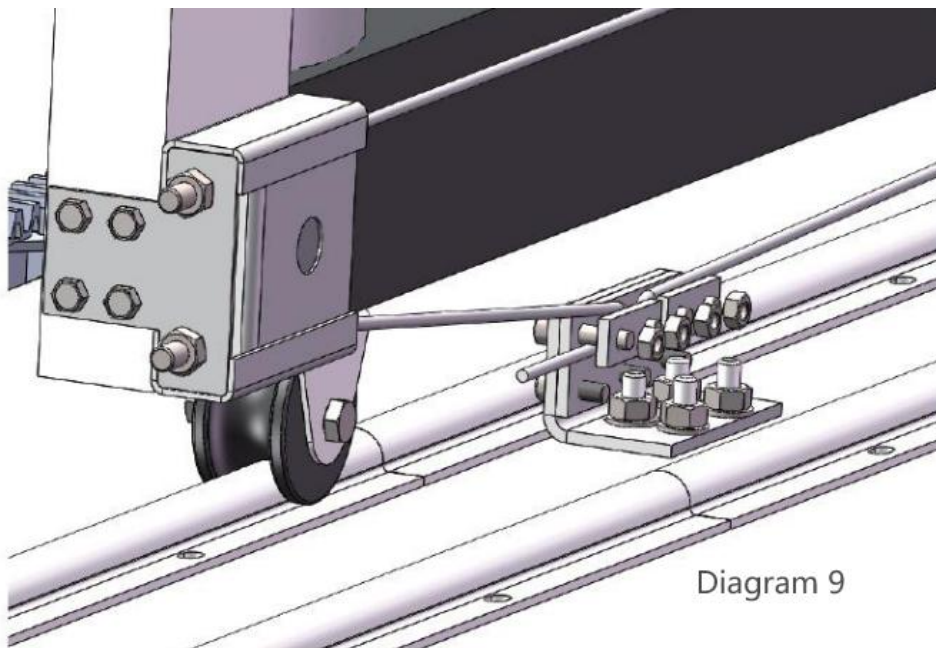
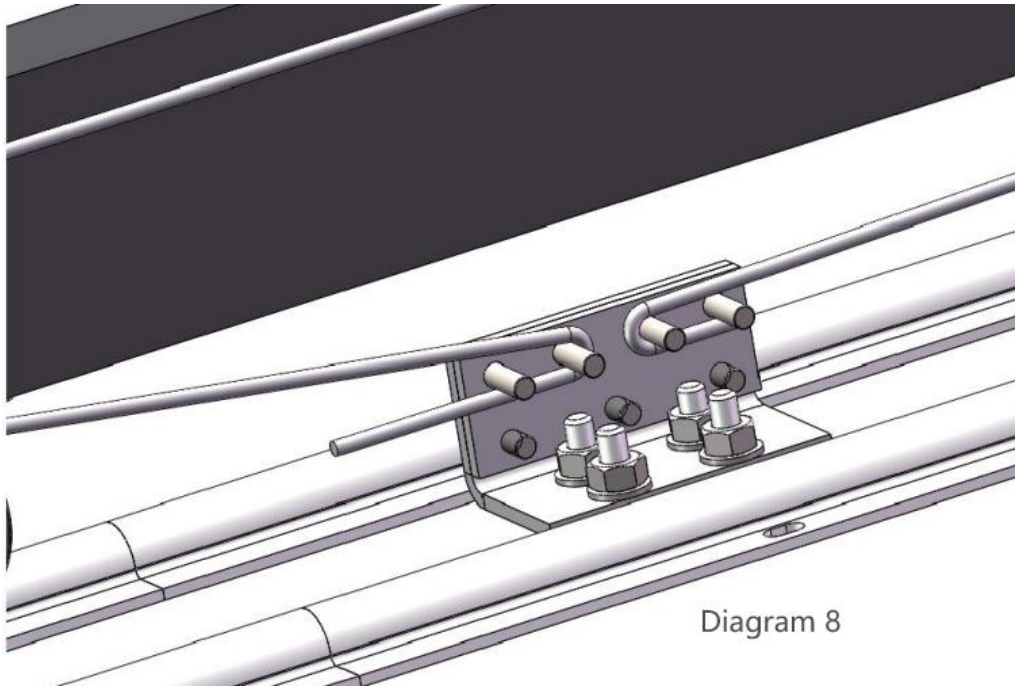


Diagram 7



Step 5. Accessory C is wound as shown in the diagram and fixed on the right side of the wire with screws.

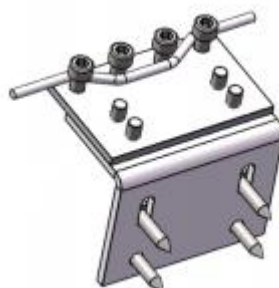
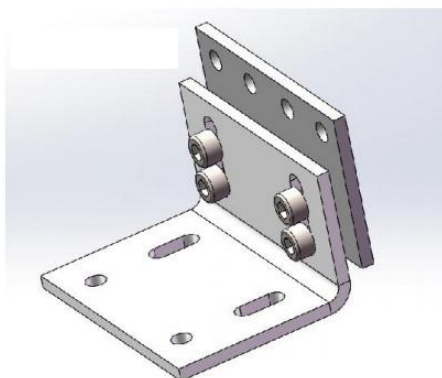
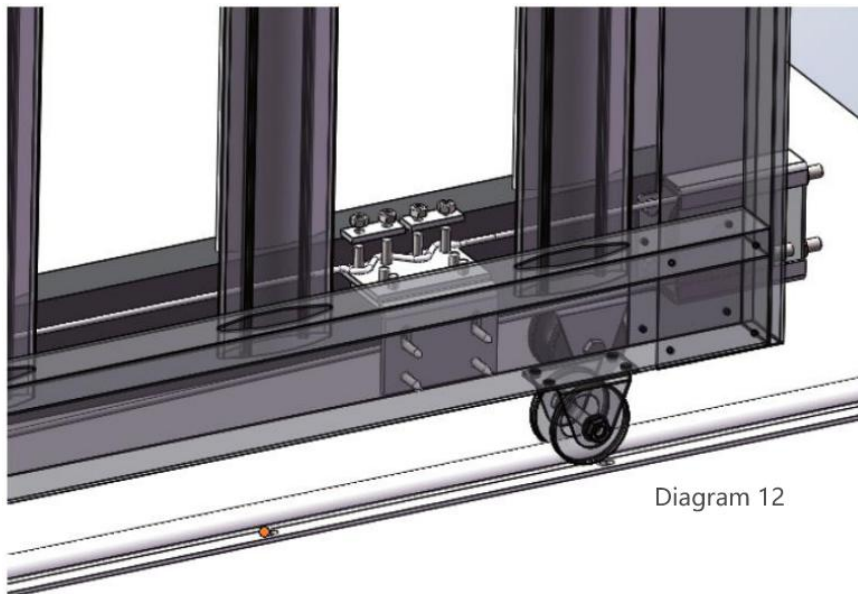
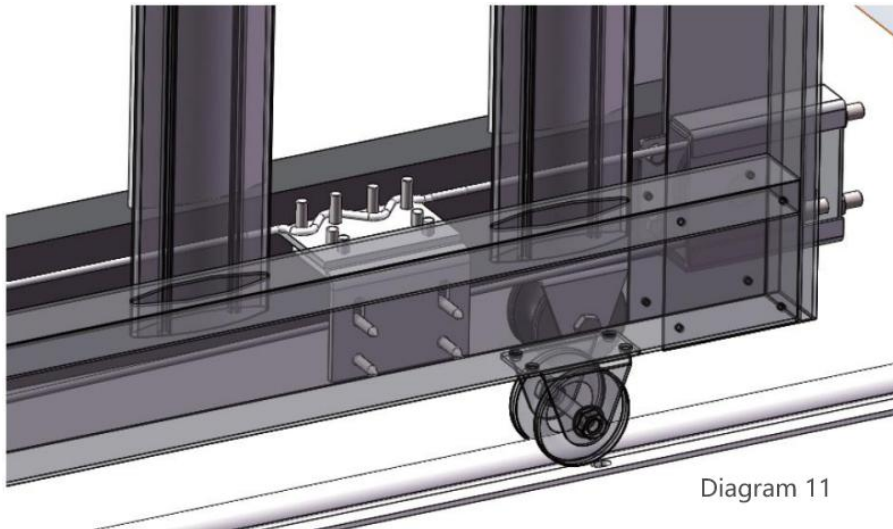
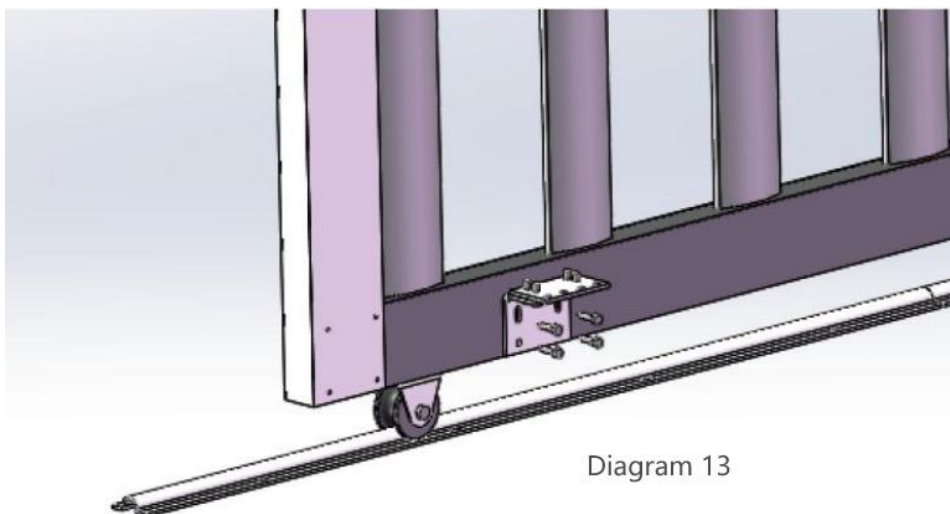


Diagram 10





Step 6. Accessory D is fixed to one side of the gate 1 of accessory B using self-tapping screws.

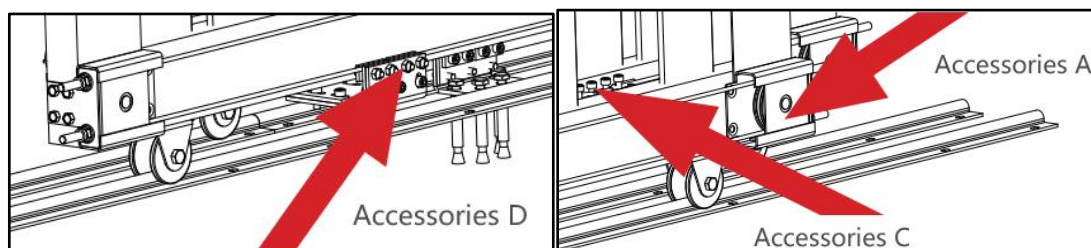
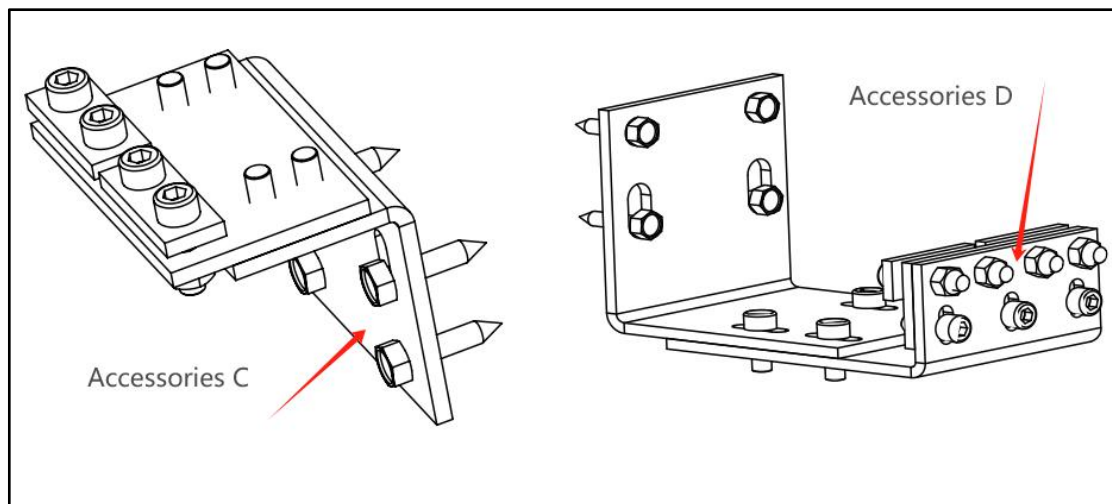
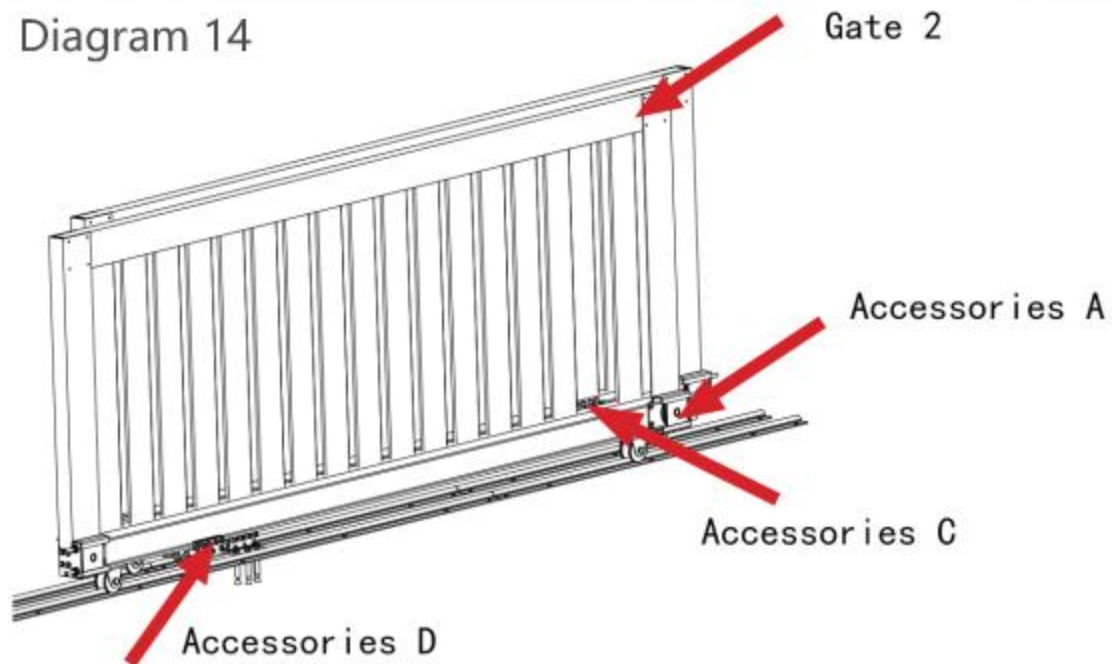


Step 7. Install the accessory A on the left and right sides of the Gate 1 with screws as shown diagram 14.

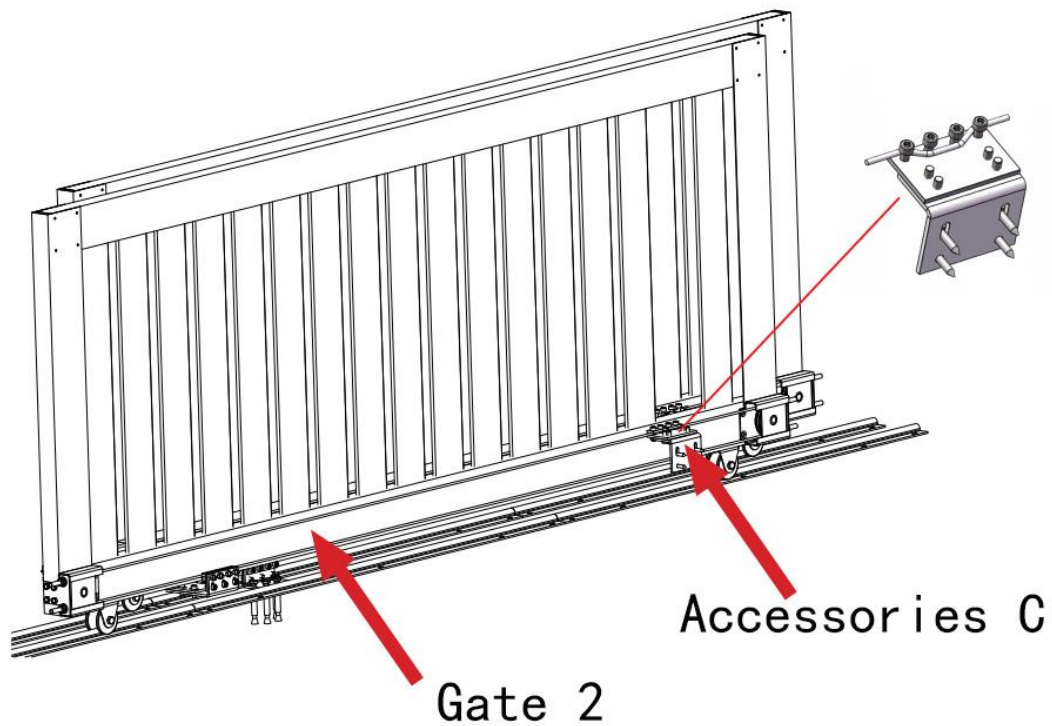
The other side of the fitting C fixed to the first door wire is fixed to the second door body with self-tapping screws.

The other side of accessory D fixed to the gate 1 needs to be fixed to the lower side of the steel wire of the gate 2 as diagram 14&15 shown. The steel wire winding method is the same as accessory B.

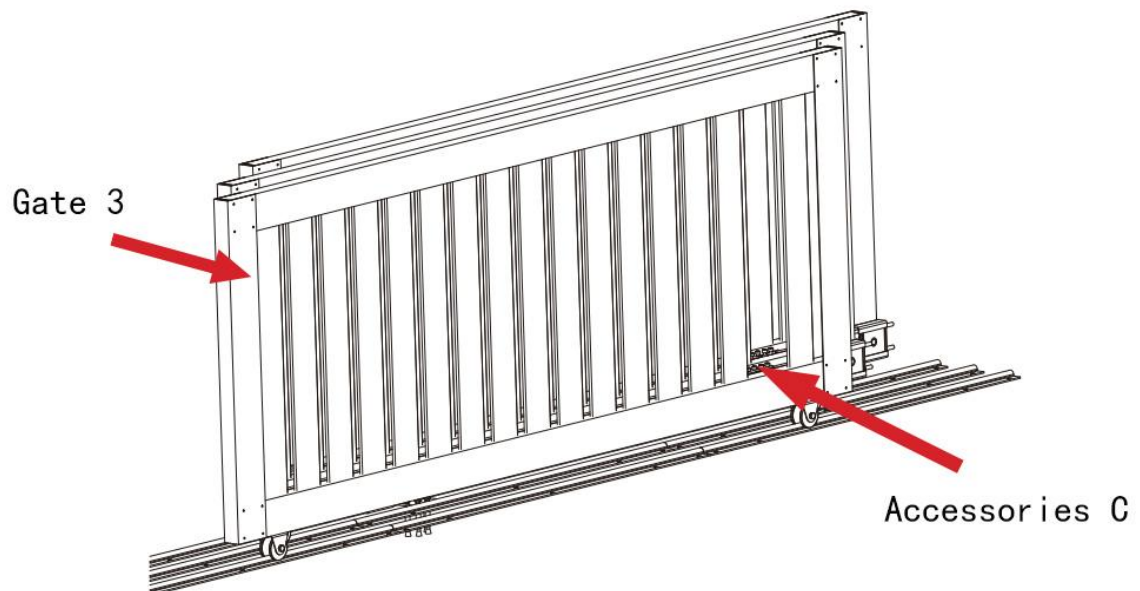
Diagram 14



Step 8. Install the accessory C in the gate 2 and fixed on the right side of the wire with screws.



Step 9. The other side of the fitting C fixed to the gate 2 wire is fixed to the gate 3 with self-tapping screws.





Step 10. Installation is completed.

