

Idol2.0 Instruction

Idol 2.0 is a remote duplicator which can copy most of rolling code and fixed code remote from 300mhz-868mhz. Can store 4 different frequency fixed or rolling code in 4 different buttons. It can even re-generate a new remote. (Table 2.0 for detailed reference)

Technical data:

Frequency: 300mhz 868mhz Working current:24mA± 2mA
Working voltage: 3V or 12V optional Static current:0.4uA± 2uA or 1.4uA± 2Ua optional
Voltage: 2.4V-3.3V or 7-12V optional Working range: 50-90m in the open area

Copy fixed and rolling code remote:

Please kindly note that all the brands in the table 3.0 can be copied by IDOL

Step1: Press together 2nd button and 3rd button for 3 seconds, the LED will be on then go off (about 1 second) till LED will be on again, release the buttons. Which means it's entering into learning mode. Please see fig 1.

Step2: Press 1st button once. Please see fig 2.

Step3: Place the original remote in front of Idol, about 2-3cm distance. Please see fig 3.

Step4: Keep pressing any button of original remote till the Idol LED blink. It means the code has been successfully stored.

Please see fig 4

Please repeat the above steps for the 2nd, 3rd, 4th buttons of Idol.



fig1



fig2

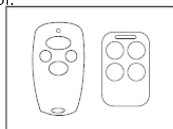


fig3



fig4

Attention: BFT, FAAC 433-868 SLH, KINGGATES, has different operation as bellowing:

BFT

Step1: Press 2nd button and 3rd button at the same time (about 3 seconds), the LED will be on then go off (about 1 second) till LED will be on again, release the buttons. Which means it's entering into learning mode. Please see fig1.

Step2: Press 1st button once. Please see fig2.

Step3: Place BFT remote in front of Idol, about 2-3cm distance. Press any BFT button you want to copy (1-3cm distance from Idol) till Idol LED light on, release the buttons. Please see fig3

Step4: Keep pressing the 1st and 2nd button of BFT at the same time (or the rear button), till Idol LED blink, release the buttons. The above successfully copied.

Please repeat the above steps for the 2nd, 3rd, 4th buttons of Idol.



fig1



fig2



fig3



fig4

FAAC 433-868 SLH (The original FAAC remote must be MASTER remote)

Attention: verify the programming remote control is a MASTER.

Pressing whatever button, the LED has to emit a double flash rather than to switch on as a fixed light.

Step1: Press together Idol's button 2 and 3 for 3 seconds, the LED will be on then go off (about 1 second) till LED will be on again, release the buttons. Which means it's entering into learning mode. Please see fig1.

Step2: Press 1st button once. Please see fig2

Step3: Place FAAC remote in front of Idol, about 2-3cm distance. Press any FAAC button you want to copy till Idol LED light.

Please see fig 3.

Step4: Press 1st and 2nd button at FAAC for 2 seconds, till FAAC remote flashes, release the buttons. Then press any button at FAAC till Idol's LED blink. It means you copy successfully.

Please repeat the above steps for the 2nd, 3rd, 4th buttons of Idol.

Notification: For **GENIUS** remote, the best distance for copying is 4-7cm.

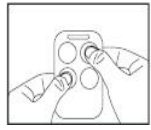


fig1



fig2

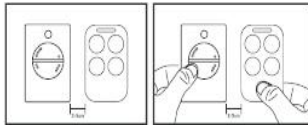


fig3

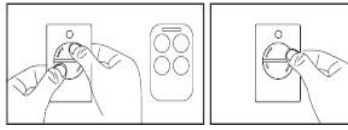


fig4

Kinggates

Step1: Long press 3rd button, then press 2nd button five times. Idol LED will short flashes. Please see fig1.

Step2: Place Motroline/Kinggates remote in front of Idol, about 2-3cm distance. Press any original button you want to copy (1-3cm distance from Idol) till Idol LED short flashes, release the buttons. Please see fig2

Step3: Press the IDOL 1st button once time, LED keep on. It's meaning learning code successfully. Please see fig3

Please repeat the above steps for the 2nd, 3rd, 4th buttons of Idol.



fig1

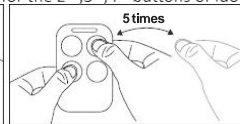


fig2

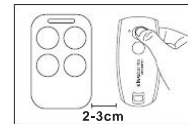


fig3

Remotely program function:

Please kindly note that all the brands in the table 1.0 can be program into original receiver

Get close to the receiver and press together Idol buttons 1 and 3 for 3 seconds, the LED will be on then go off (about 1 second)

till LED will be on again, release the buttons. Which means it's entering into remotely program mode. Then press any Idols button that you already copied once, to indicate that remotely program procedure has started. After 8 seconds, wait the activation of the receiver (gate opening, lights starting, etc..) The remote control has been memorized.

Attention: If the receiver doesn't work, the "remote program function" maybe disarmed, if so please operate it manually.

Please kindly note that fixed code remote after copying, Idol can act as the original remote and do not need to program with receiver.

Table 1.0

List 1	List 2
ALLMATIC B.RO OVER, B.RO 2WN, TECH3, MINIPASS, BRO.STAR APRIMATIC TR2/4, TM4 BENINCA TO.GO2 /4 VW, TO.GO2/4 QV, IO, T2/4 VW BFT MITTO 2/4M, MITTO 2/ 4A, MITTO RCB02/04, GHIBLI, KLEIO, TRC2/ 4, RB4 MURALE CARDIN S449 TRQ449100/TRQ449200/ TRQ449300/TRQ449400, TXQ449200/TXQ449300/ TXQ449400, S486:TRQ486200/ TRQ486400, TXQ486200/ TXQ486400 DITEC GOL4, BIXLP2/2 RED, BIXLG4 FAAC XT4 433 RC, TE4433H FADINI JUBI SMALL, JUBI-2, JUBI-4 GENIUS BRAVO TE4433H, ECHO GIBIDI AU1680 WOOD, GIBIDI AU1610/1680, AU1810/1600, AU01590 AU03000 DOMINO, DTC 4334	KING GATES STYLO 4 MHOUSE TX4, TX3, GTX4 NICE SMILO2/4, FLO1/2/4R-S,VERY VR, FLO1R-S,FLO2R-S,FLO4R-S,FLO1RE/FLO2RE/FLO4RE NOVOTECNICA BIXL2 O&O TWIN,TX2/TX4(NEO),T.COM R4-2/T.COMR4-4,T.COM R8-2/T.COM R8-4 TAU 250 SLIM RP,250 T4 RP VDS TRQ, ECO-R V2 PHOENIX 433-868, TXC, TSC, TRC, HANDY PUJOL VARIO, MARTE ADYX BRAVO, TE4433H, TE4433H BLUE PRASTEL MPSTF2/F4RE, MPSTL-1E/2E/4E, MPSTP2E/2E BLUE, MT4E/2E, BFOR, TRQ4P, TC2E, TRQ2P SOMFY TELIS 1/ 4 RTS

Re-generate function:

If customers buy an Idol remote, but they lost their original remote, they can re-generate an original remote.

Step1: Press together 1st button and 4th button for 3 seconds, the LED will be on then go off (about 1 second) till LED will be on again, release the buttons. Which means it's entering into Re-generate mode. Please see the fig1

Step2: Press buttons to choose the brands as table 2.0. For example, if you choose BFT MITTO brand, press 1st button once, then LED flashes once.

Step3: Confirm the brand. Press 3rd and 4th button at the same time. Till LED blink, release the buttons. Now the Idol remote is functioning as a new BFT MITTO remote. Please see fig2.

Note1. If you are using Idol to regenerate a FAAC 4 buttons remote, then re-generate a BFT 2 buttons remote, then in the Idol remote, 1st and 2nd button is BFT code, 3rd and 4th button is FAAC code.

Note2. If you press 1 time, the Idol's LED flashes once; if you press 2 times, the Idol's LED flashes twice and so on.



fig1



fig2

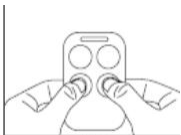


fig3

Table2.0

Remote	Press time 1	Press times 2	Press 3 times	Press 4 times	Press 5 times	Press 6 times
1 st button	BFT MITTO	BENINCA cupido	NICE SMILO	NICEFLOR-S	Motorline	
2 nd button	FAAC XT4 433 SLH	CAME TOP-432NA	DITEC DOL4C	GLIDEROL 315	SLAVE	
3 rd button	SUPERLIFT	NOVA	V2 PHOENIX2	DOORHAN TRANSMITTER 4	KINGGATES	
4 th button	BOSS BHT4	ATA PTX4	SOMMER 4020 868MHZ	ROGER		Merlin 2.0+

Complete copy brands list Table 3.0

BRAND	MODLE NO.	FUNCTION
ADYX	BRAVO.TE4433H,TE4433H BLUE	Need to activate the receiver
ALLMATIC	B.R.O OVER, B.R.O 2WN, TECH3, MINIPASS, BRO.STAR	Remotely program function
ALUTECH		Need to activate the receiver
APERTO (SOMMER)	TX02-434-2, TX02-868-2 BLUE, 4025 TX02-868-2, 4022 TX02434-2, 4020 TX-03-868-4, 4013 TX03-434-4	Need to activate the receiver
APRIMATIC	TR2/TR4, TM4	Remotely program function
ATA	PTX4 BLUE/PTX 4 PINK	Need to activate the receiver
BALLAN	FM404B,4013	Need to activate the receiver
BENINCA	TO.GO2 VW/TO.GO4 VW, TO.GO2 QV, TO.GO4 QV, IO, T2 VW/TO.GO4 VW, APPLE LOT2WCV	Remotely program function
BFT	MITTO 2M/MITTO4M, MITTO 2A/ MITTO 4A, MITTO RCB02/MITTORCB04, GHIBLI, KLEIO, TRC2/ TRC4, RB4 MURALE	Remotely program function
BOSS	BHT4	Note! Fixed Code Match Receiver directly
CAME	IAM 432 SA, TOP 432 NA/TOP 434 NA, TOP 432 SD, TOP 432 EV/TOP 434 EV	Note! Fixed Code Match Receiver directly
CARDIN	S449 TRQ449100/TRQ449200/ TRQ449300/TRQ449400, TXQ449200/TXQ449300/ TXQ449400, S486:TRQ486200 TRQ486400, TXQ486200/ TXQ486400	Remotely program function
CHAMBERLAIN/LIFTMASTER/MOTORLIFT	94335E, 4333E, 4335E, 94334E, 4333EML, 4335EML, 84334EML, 4335EML	Need to activate the receiver
CLEMSA	MUTANCODE.MASTERCODE MV	Note! Fixed Code Match Receiver directly
DEA	TR2 /4 MIO,GENIE R, TS2/4 MIO 868/ 868	Need to activate the receiver
DASPI	ZERO 2 RC/ZERO4 RC	Need to activate the receiver
DITEC	GOL4, BIXLP2/2 RED, BIXLG4	Remotely program function
DOORHAN	TRANSMITTER 4	Need to activate the receiver
ECOSTAR	RSE,RSC,RSZ	Need to activate the receiver
FAAC	XT4 433 RC, TE4433H	Remotely program function
FAAC	XT2/XT4 433 SLH, XT2/XT4 868 SLH, XT2/XT4 433 SLH LR, XT2/XT4 868 SLH LR, T2/T4 433 SLH, T2/ T4 868 SLH, TML2/TML4 433 SLH, TML2/TML4 868 SLH, DL2/DL4 868 SLH.	Remotely program function
FADINI	JUBI SMALL, JUBI-2, JUBI-4	Remotely program function
GENIE	GITR-3,GIT,GICT390,GIFT390-1.G3T-BX,G1T-BX,GM3T,G1CTD,GIFTD	Need to activate the receiver
GENIUS	BRAVO TE4433H, ECHO	Remotely program function

GENIUS	JA332 AMIGO 2 868,JA334 AMIGO 4, AMIGOLD 2/AMIGOLD 4, KILO 2/KILO 4 433 JLC, KILO2/KILO4 868 JLC	Need to activate the receiver
GIBIDI	AU1680 WOOD, GIBIDI AU1610, GIBIDI AU1680, AU1810, AU1600,AU01590 AU03000 DOMINO, DTC 4334	Remotely program function
GLIDEROL	315MHZ	Need to activate the receiver
HORMANN	HSM4 868MHZ,HSE2-868-BS,HS 4 BS	Note! Fixed Code Match Receiver directly
KEY	900TXB - 42R, SUB44, TXB-44R, TXG-44R	Need to activate the receiver
KING GATES	STYLO 4	Need to activate the receiver
LABEL	SPYCO	Need to activate the receiver
LINEAR	MCT-11,ACT-21,ACT-22,STINGRAY ACT-31,STING RAY ACT-34B	Need to activate the receiver
MHOUSE	TX4, TX3, GTX4	Remotely program function
MERLIN + 2.0	E945M, E943M, E940M, E940M	Need to activate the receiver
MERLIN/PROLIFT	M230T(PROLIFT),M430R(PROLIFT)	Need to activate the receiver
MERLIN	M842, M832, M844, C945, C940, C943	Need to activate the receiver
MOOVO	MT4	Remotely program function
MOTORLINE		Need to activate the receiver
NICE	ONE:ON1/ON2/ON4/ON9,ONE ERA:ON1E/ON2E/ON4E/ON9E, INT11, INT12	Remotely program function
NICE	SMILO2/SMILO4, FLO1R-S, FLO2RS,FLO4R-S, VERY VR, FLO1RE/ FLO2RE/FLO4RE	Remotely program function
NOVOFERM	NOVOTRON 502-504-512MIX43-2,MTR40-2,MCHS43-2,MHS 43(2-4),MSHS433(2-4)	Need to activate the receiver
NOVOTECNICA	BIXL2	Need to activate the receiver
NOVA		Need to activate the receiver
O&O	TWIN,TX2/TX4(NEO), T.COM R4-2/TCOM R4-4.T.COM R8-2/T.COM R8-4	Remotely program function
Peccinin	TX MENBRANA	Need to activate the receiver
PRATEL	MPSTF2/F4RE, MPSTL-1E/2E/4E, MPSTP2E/2E BLUE, MT4E/2E, BFOR, TRQ4P, TC2E, TRQ2P	Remotely program function
PROEM	ER2C4ACS/ER4C4ACS	Need to activate the receiver
PUJOL	VARIO, MARTE	Need to activate the receiver
PROTECO		Note! Fixed Code Match Receiver directly
RIB	LITHIO	Note! Fixed Code Match Receiver directly
Rossi		Need to activate the receiver
SEA	HEAD,SMART DUAL ROLL,SMART-3 ROLLING CODE,COCCINELLA ROLL	Need to activate the receiver
SEAV	BE-HAPPY-RS1, BE-HAPPY-RS2, BE-HAPPY RS3, BE-SMART RSX, BE-HAPPY RH1, BE-HAPPY RH2, BE-HAPPY RH3	Need to activate the receiver
SLAVE		Need to activate the receiver
SIMINOR	S433-4T/S433.4T SIMINOR 433-NLT2/433-NLT4	Need to activate the receiver
SUPERLIFT		Need to activate the receiver
SOMFY	TELIS 1/ 4 RTS	Need to activate the receiver
SOMFY	KEYTIS 2/ 4 NS,KEYGO 4 RTS,SOMFY 433-NLT4 BEIGE, SOMFY 433-NLT2 RTR, SOMFY TX2 433MHZ	Need to activate the receiver
SOMMER	4014 TX03-434-2, 4013 TX02-434-4, 4022 TX03-434-2, 4026 TX03-868-2, 4020 TX03-868-4, 4025-TX02868.4011, 4010	Need to activate the receiver
STAGNOLI	AV223	Need to activate the receiver
TAU	250 SLIM RP,250 T4 RP	Remotely program function
TELCOMA	FM402,FM402 E	Need to activate the receiver
VDS	TRQ,ECO-R	Remotely program function
V2	PHOENIX 433-868,TXC,TSC,TRC,HANDY	Remotely program function