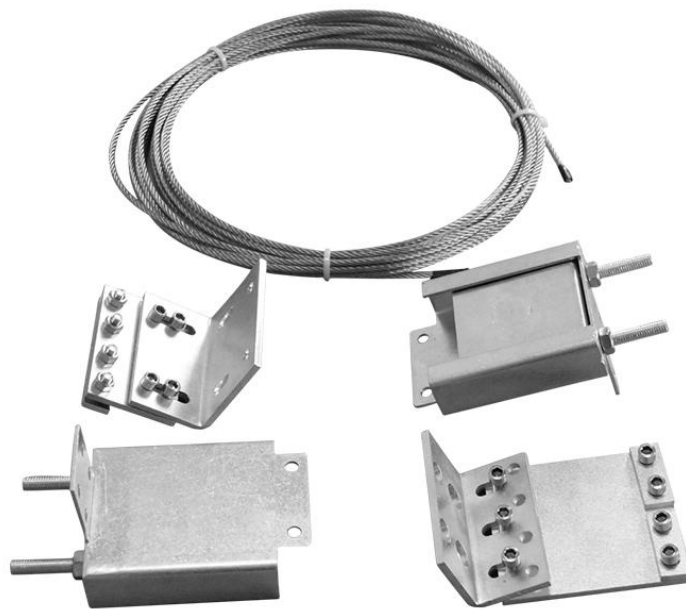


Installation Manual

Telescopic Gate System



This installation manual should be considered as a guide only, it cannot account for many of the installation variables which may affect part placements, measurements, sizing etc.

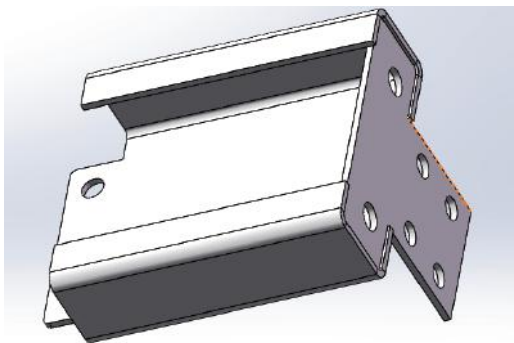
Please always use your own discretion as an installer to double-check, temporarily fix and test prior to final fitting.

1. Specifications

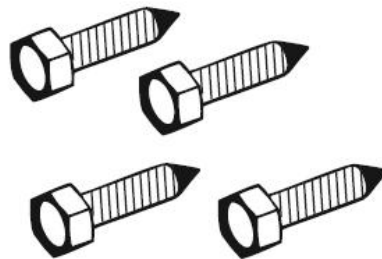
Max. Gate Width	4600mm
Max. Driveway Width	8500mm
Ma.x Gate Weight	250kg Each
Replacement bearing size	32mm OD-15mm ID-9mm Thick-Deep Grove Ball bearing
Cable	10m 4mm Stainless Steel

2. Installation & Supplied Parts

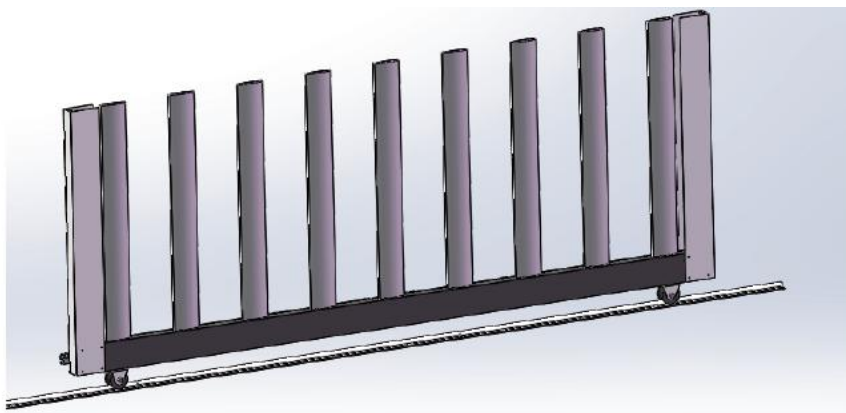
PART 1.



fitting 1 Adjustable Pulley Carrier

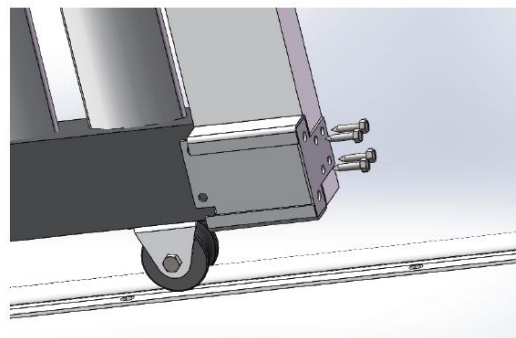
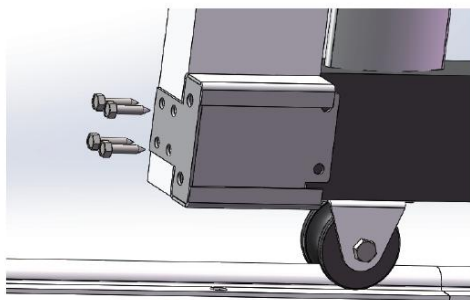


fitting 2 Self Drilling Tek Screw (M6 25mm)

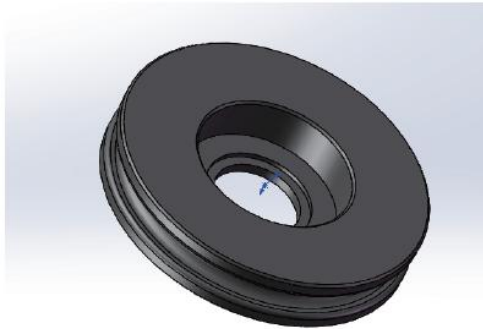


The First door

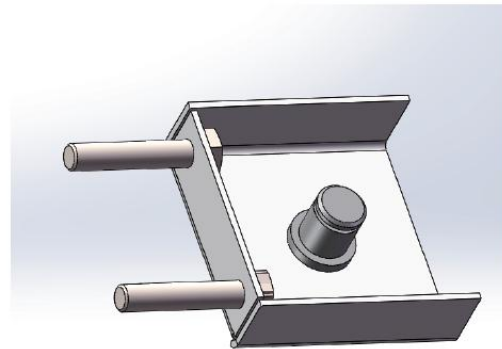
Step 1: Adjustable Pulley Carrier Assemblies Fitted to the FIRST side of the gate closest to the motor (Drive Gate) on each side of the gate as following picture:



PART 2

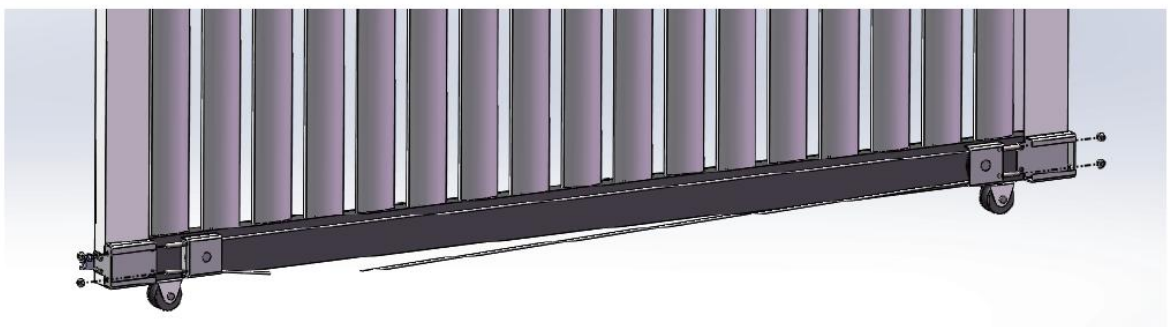
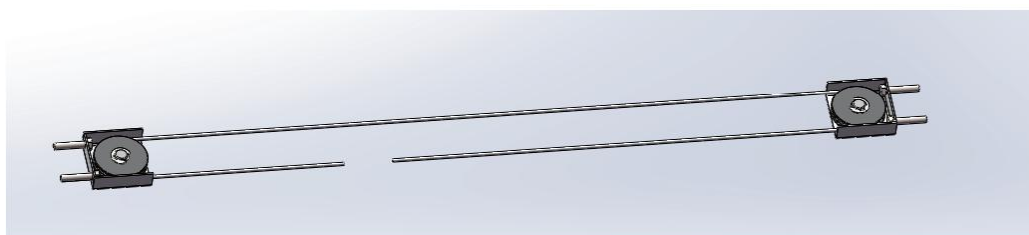
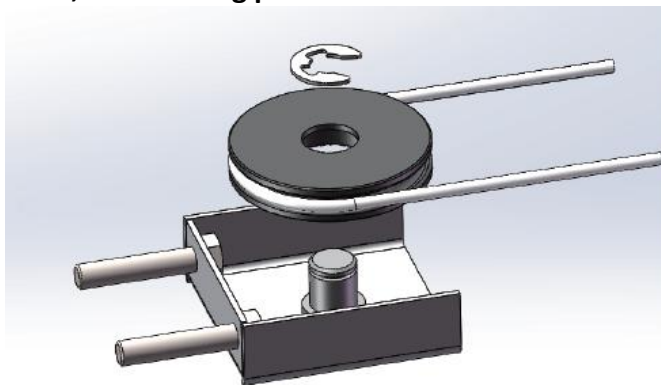


Fitting 3 Wire wheel

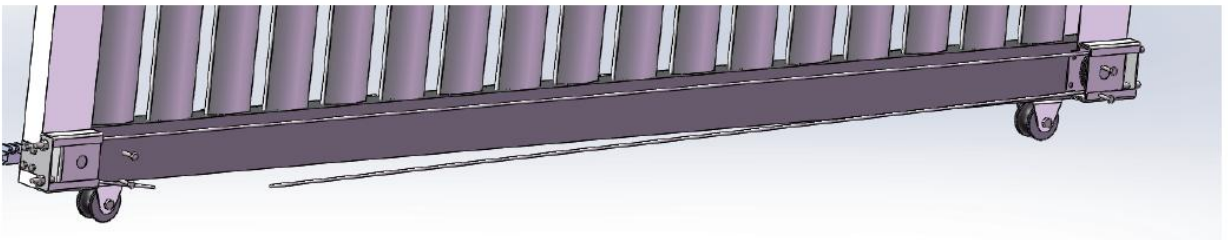
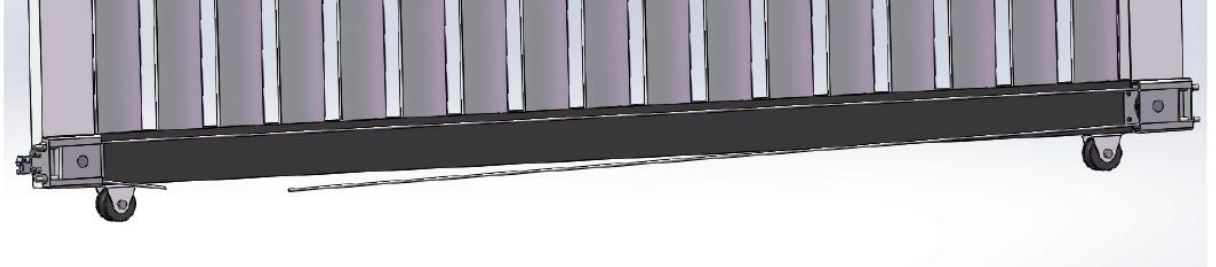


fitting 4 Adjustable Pulley Carrier

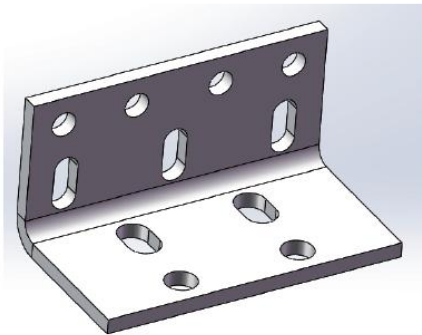
Step 2: Tap the steel wire wheel into the shaft of the telescopic door fitting 3, and then use the E-type clamp spring to clamp into the clamping groove on the shaft, as following picture:



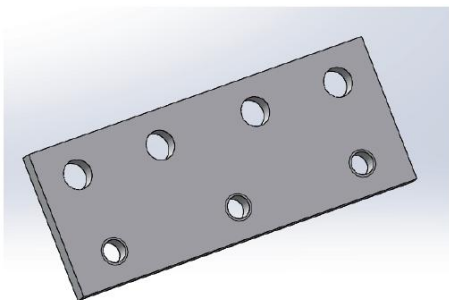
Step3: Install the wheel assembly fittings into the guide groove (left and right) of the fixed expansion door fittings for the first door, and pretighten with the M8 nut,as following pictures



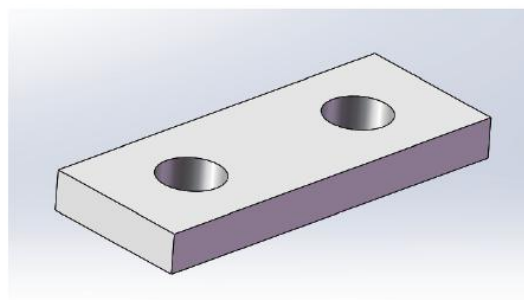
PART 3



Fitting5 Bracket 1

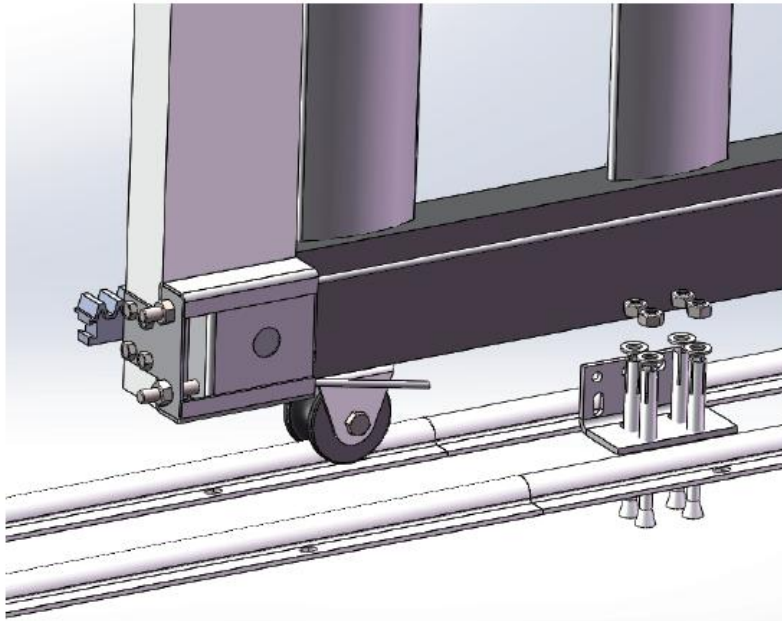


Fitting6 Bracket 2

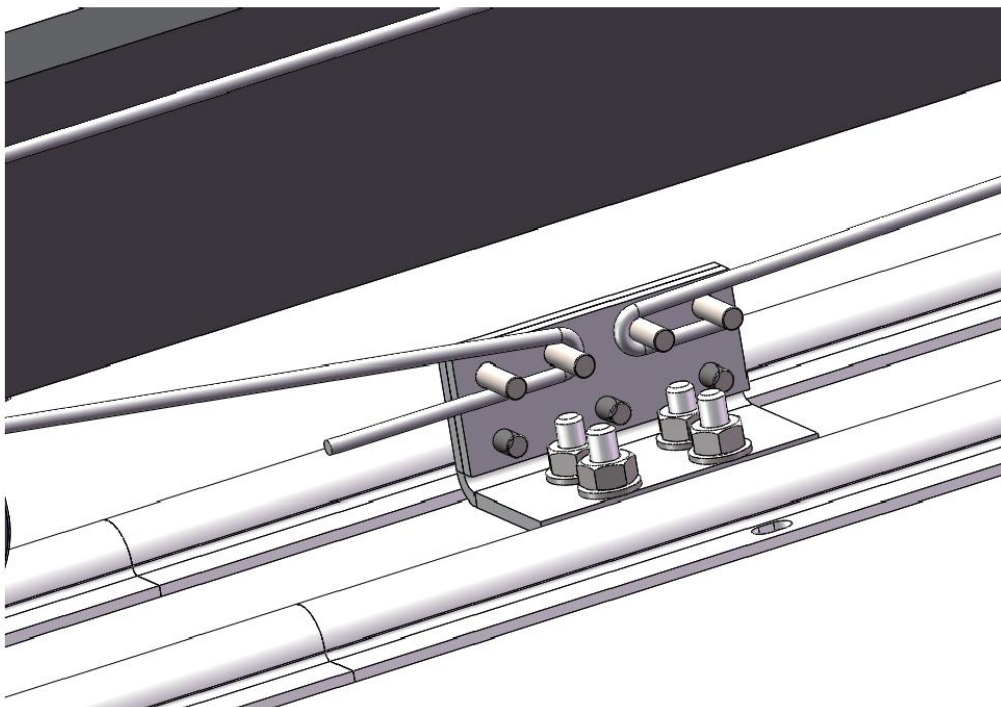


Fitting7 Bracket 3

Step4 :Put the first door in the fully open state, and fix the bracket 1 on the near side of the closing direction with ground expansion bolts

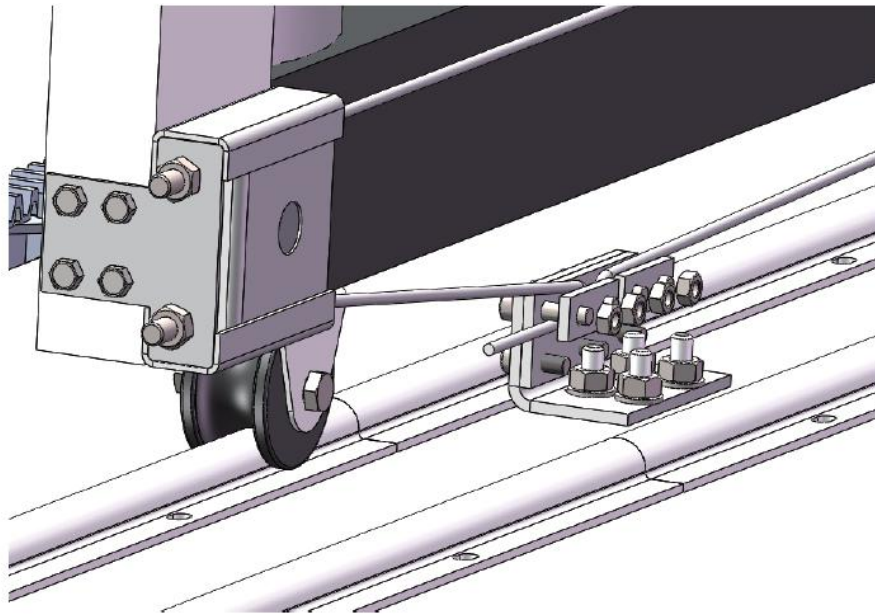


Step5: Bracket 2 and Bracket 1 are threaded through the holes with four M6X20, three and M6X16 screws, rewind the steel wire in the shape of "8"

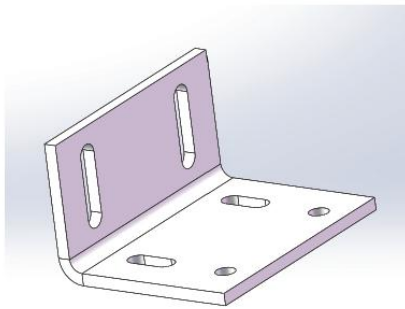


Step 6: The bracket 3 presses the wire and locks it with the M6 nut,as following

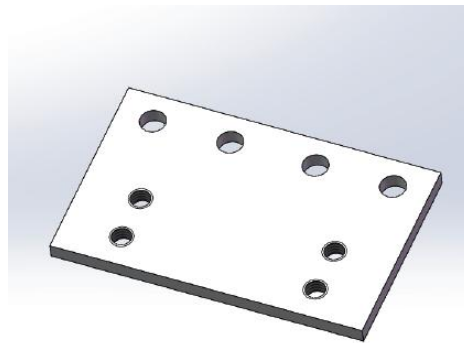
picture



PART 4



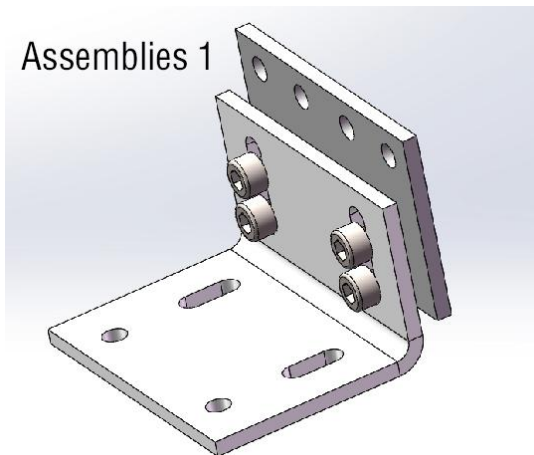
Fitting 8 Anchor Bracket



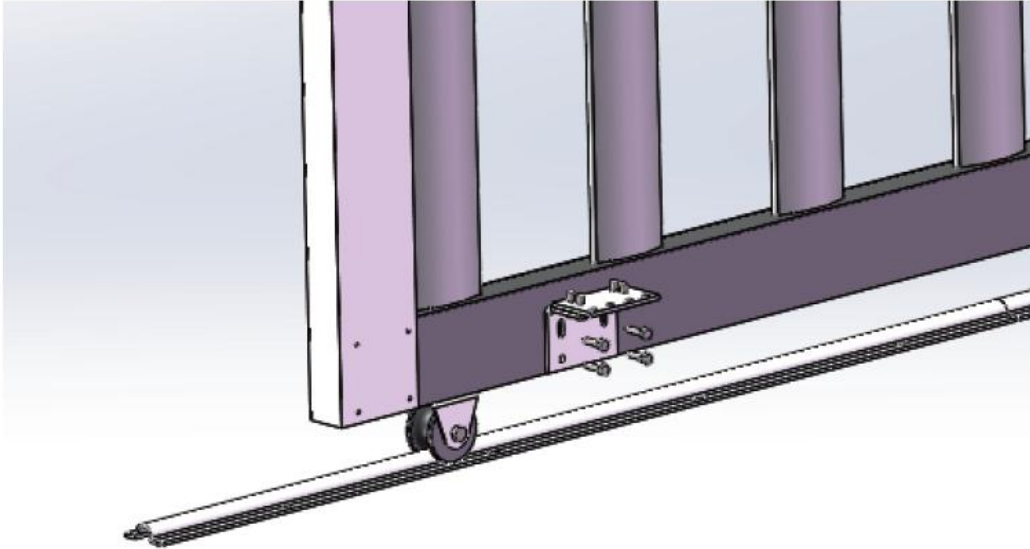
Fitting 8 Lowering Plate

Sept 7: Pretighten Anchor Bracket and Lowering Plate with M6X16 screws as following picture:

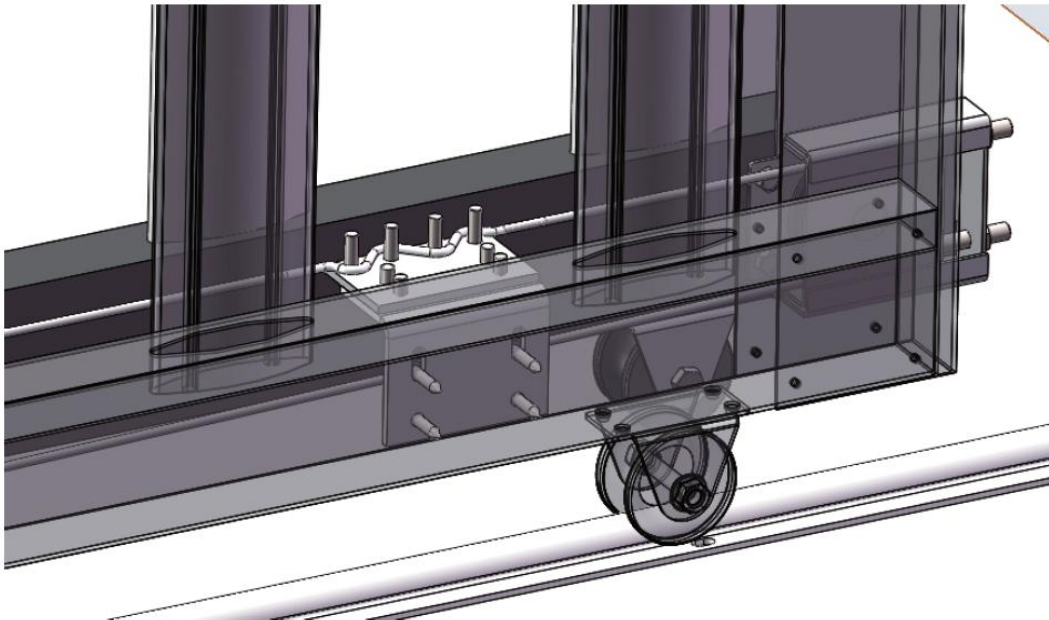
Assemblies 1



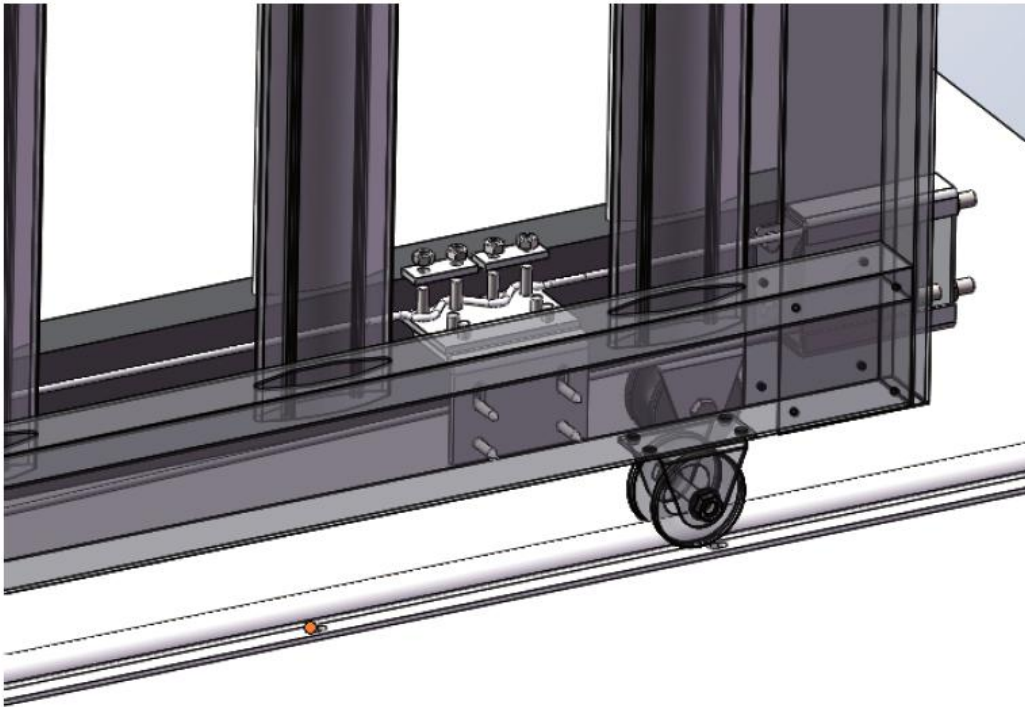
Sept 8: Fix the Assemblies 1 on the two sides of the second door with ST6.3X25 tapping screws,as following picture



Sept 9: Place the Assemblies 1 on the other side of the first door and wind the steel wire "S" into the screw,as following picture



Sept 10: The bracket 3 presses the wire and locks it with the M6 nut



PART 5 Final Rendering

