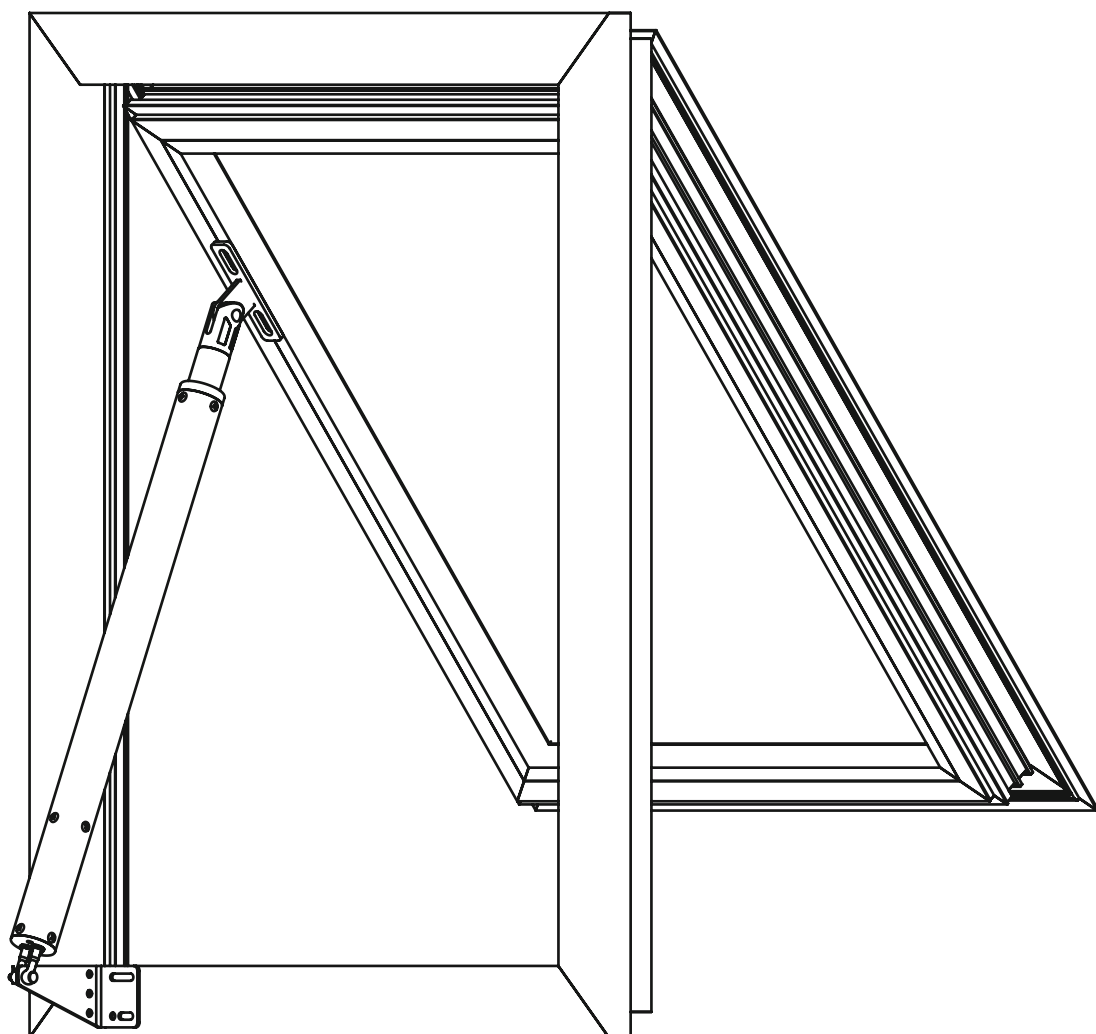
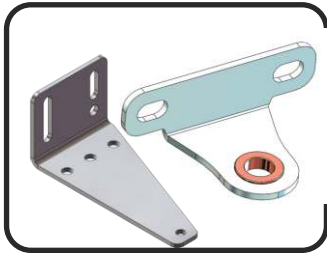


# Outward Opening Automatic Window Opener

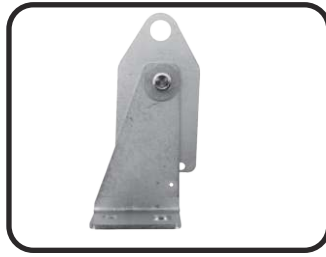


**PKM-C01C**

## 1. Standard Part:



x1



x1



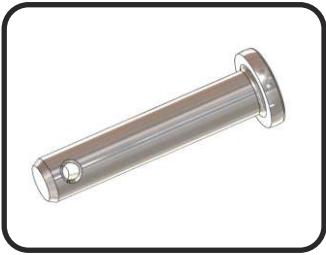
x2



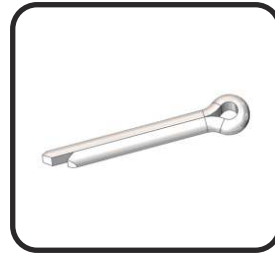
x5



x1



x1



x1

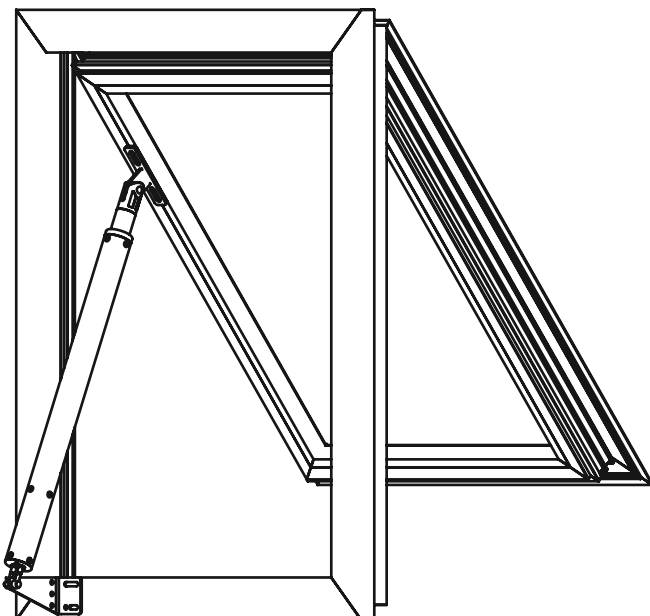


x1

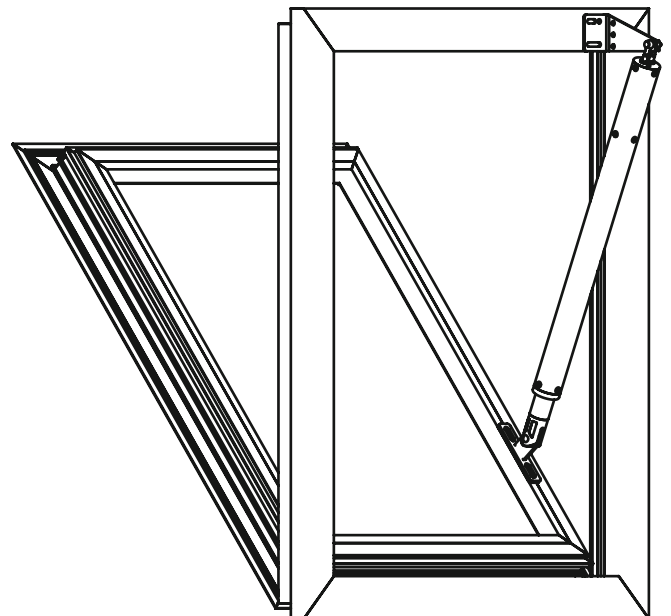
## 2. Technical parameters:

- Voltage: DC12V 10W
- Rotating Speed: 185 RPM
- Maximum Window Length: 1.5 Meters
- Operating Temperature: -45°C ~ +50°C
- Memory: 15pcs Remote Controls
- Stroke: 300mm. Customized according to customer requirements
- Input: 220VAC±10%/120VAC±10%
- Running Speed: 1.2CM/S
- Running Time: 5 Minutes
- Maximum Weight Window: 50 KG
- Material: Aluminum Alloy and Stainless Steel
- Protection Level: IP55

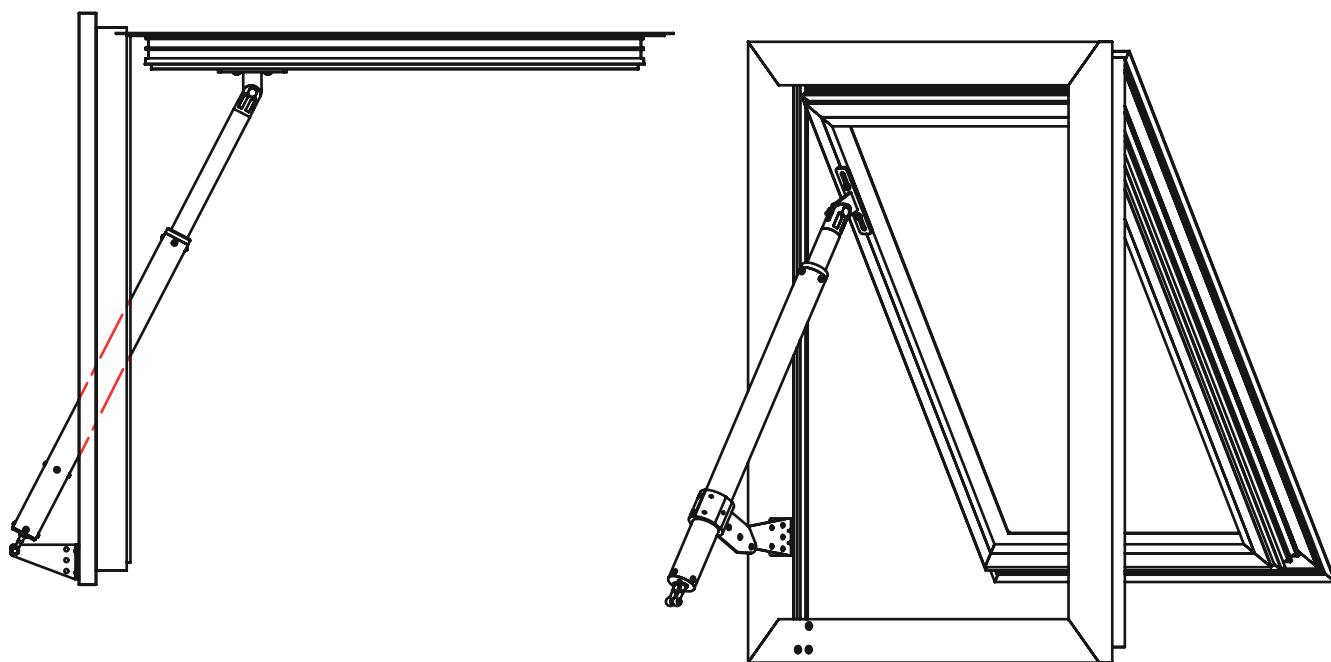
## 3. Application Places:



Top Hung Window

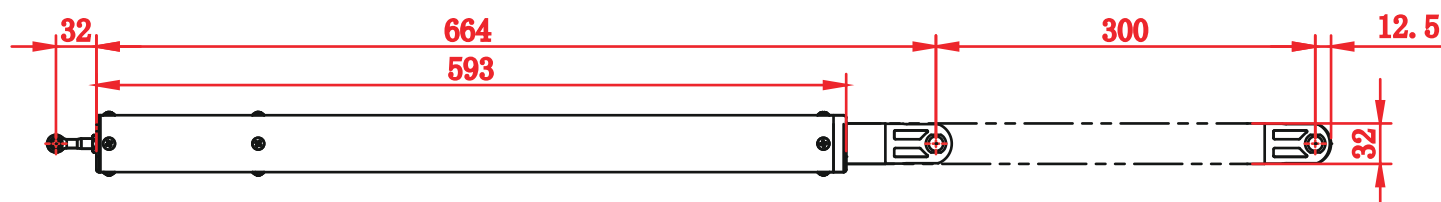
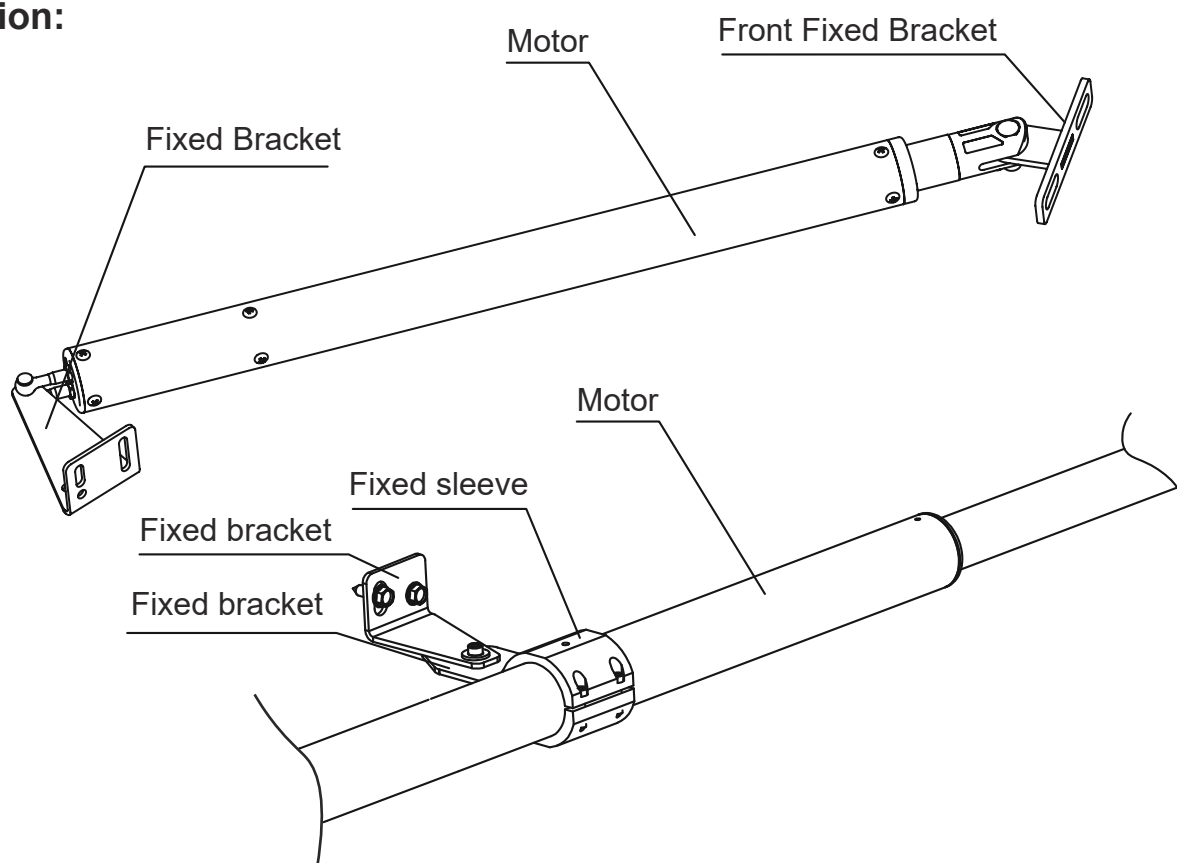


Bottom Hung Window

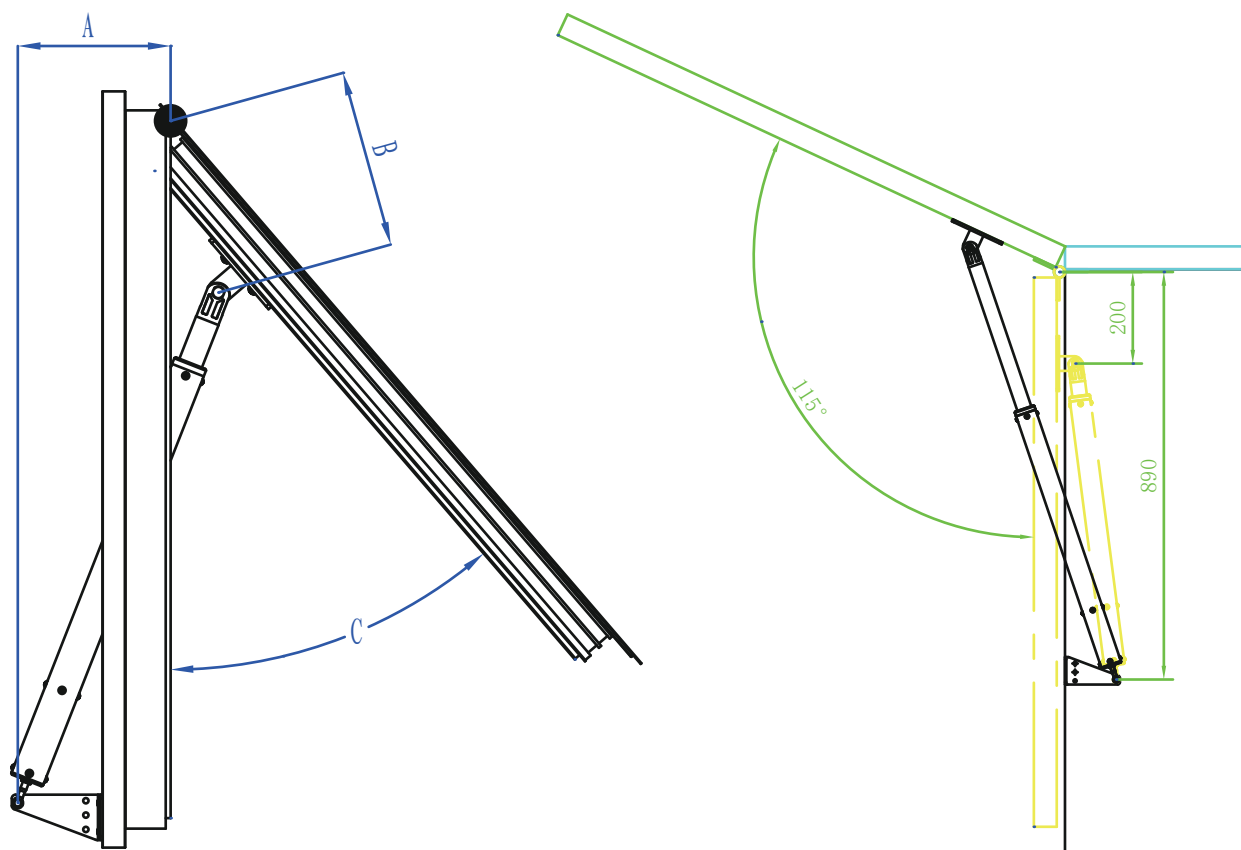


**Rooftop Window**

#### 4. Installation:

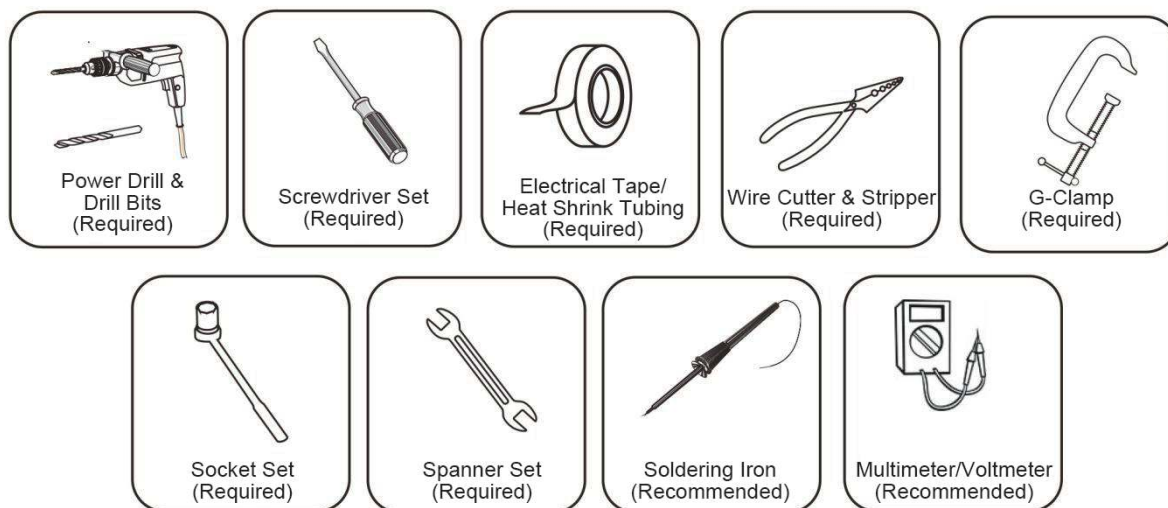


安装时注意窗机应和窗有夹角不能和窗平行，图上A尺寸应尽量取大值



## STEP 1:

Before installing the motor , please prepare the tool



## STEP 2:

把窗机伸到最长然后在窗框或者窗台上要安装后支架的地方做记号，并确定前支架的安装位置。然后伸缩窗机看看安装位置和效果，确认好后把后支架安装到位

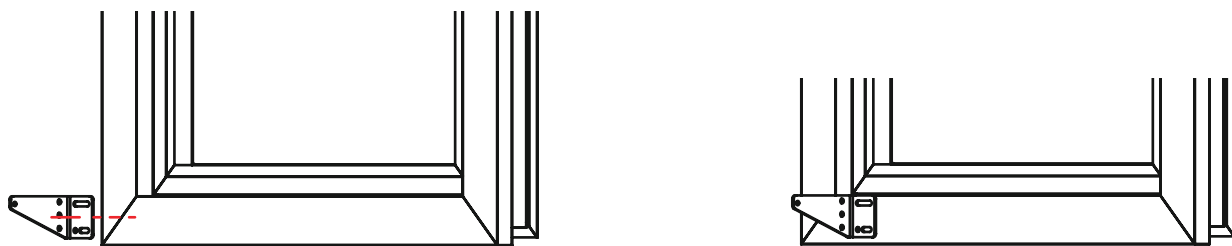


fig 1

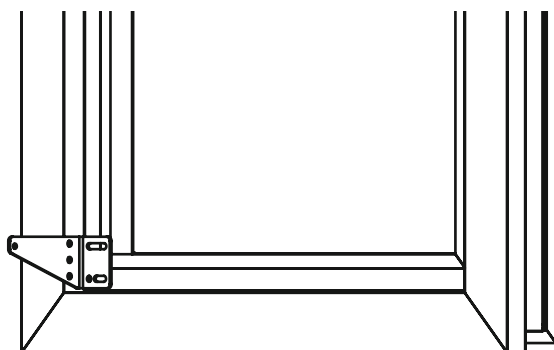


fig 2

## STEP 3:

Fix the front bracket with screws. As fig 3

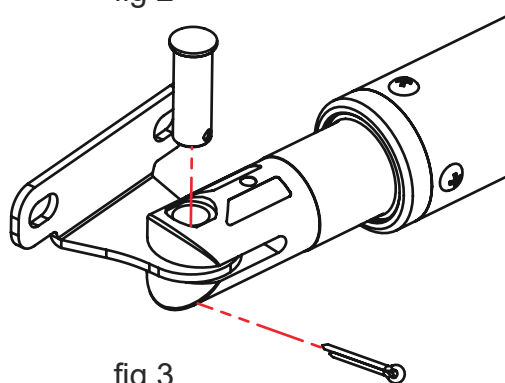


fig 3

## STEP 4:

将马达安装到后支架上 as fig 4

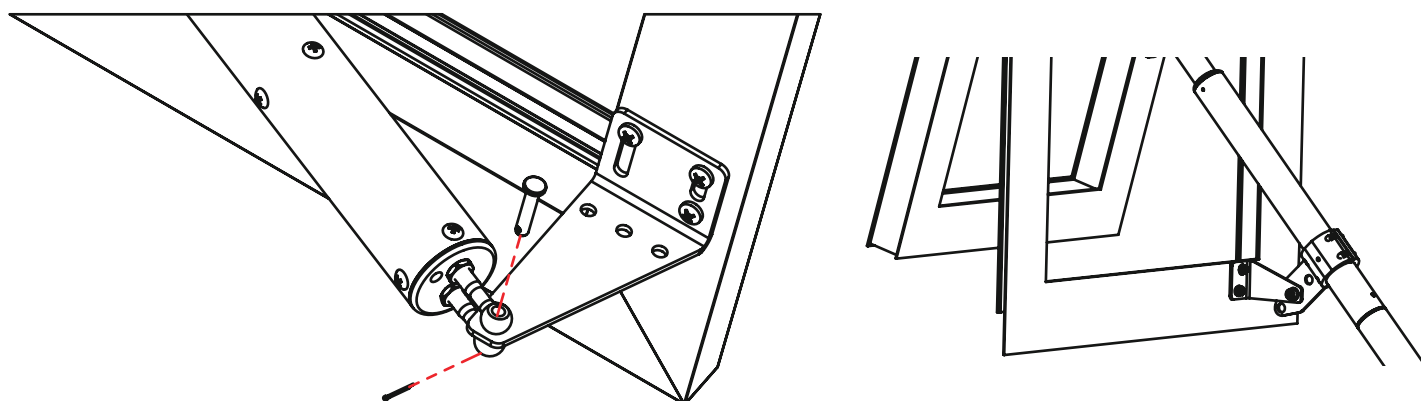


fig 4

## STEP 5:

Fix the front bracket with self-drilling screws (fixed on the movable feature body) as fig 5

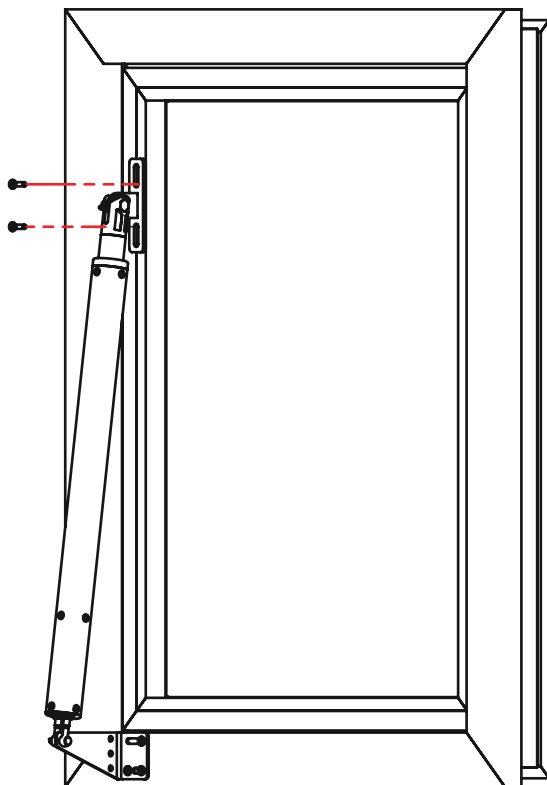
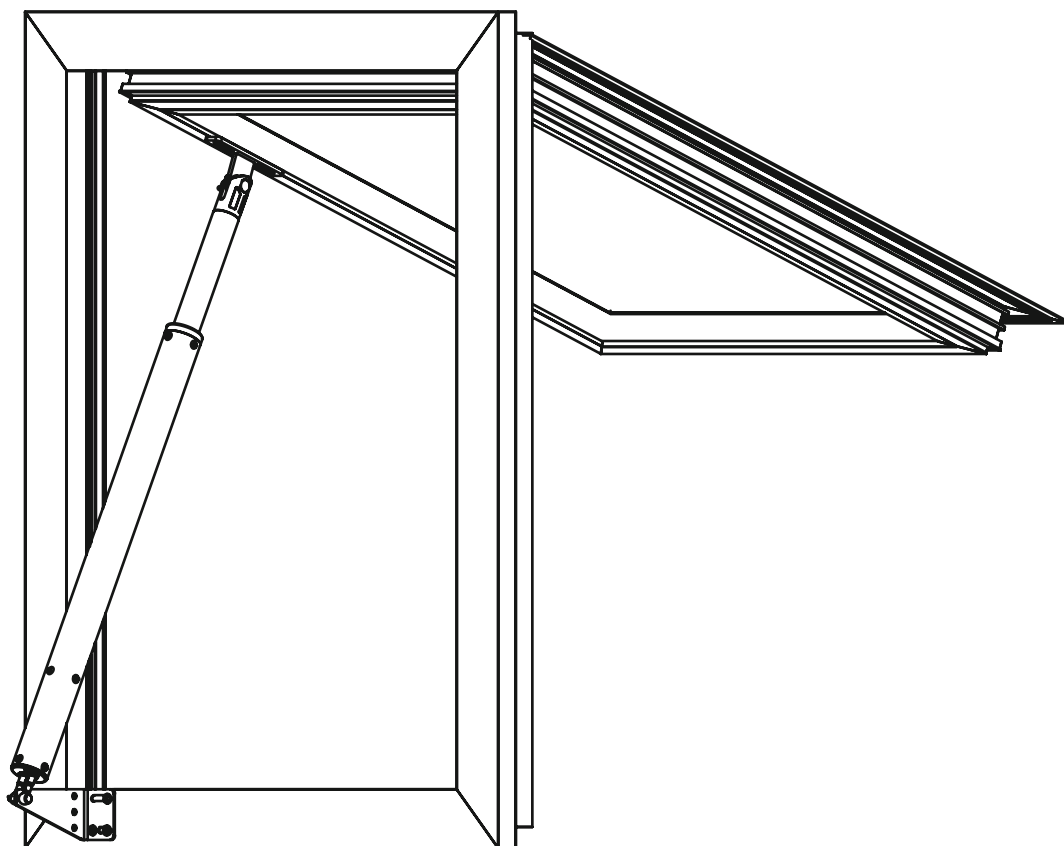


fig 5

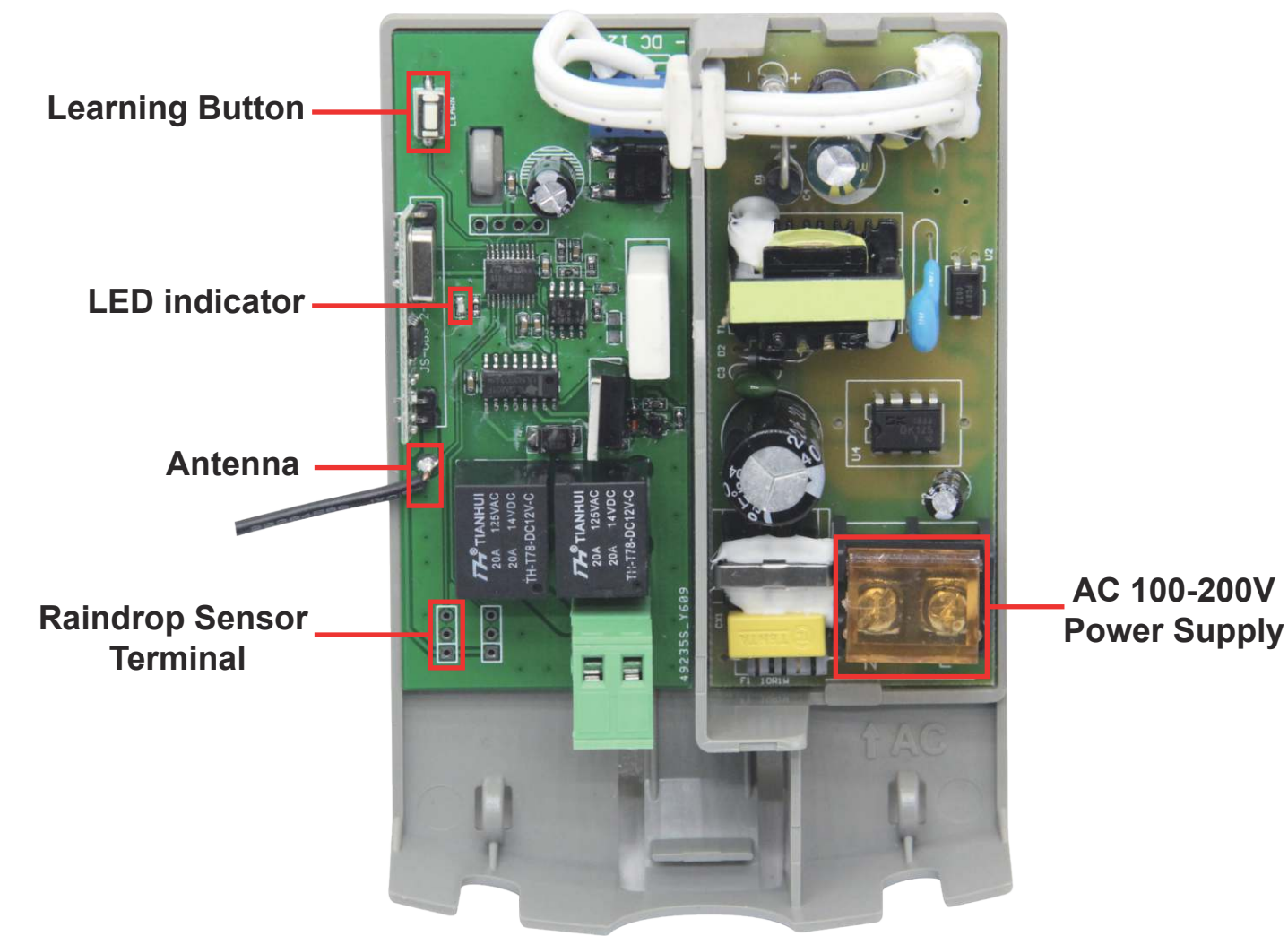
## STEP 6:

安装完成，把所有开口销安装上去



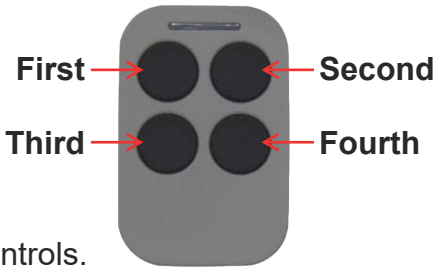
5. Control System Parameters

Power Supply	AC100-230V 50-60Hz
Load Motor	12VDC 36W
Static Current	0.5W
Remote Control Frequency	433.92Mhz
Remote Code	Giant Rolling Code
Remote Control Effective Distance	80M in an Open Area



N / L	AC100-230V input
Motor	Connect with 12V / 24V window motor
Raindrop Sensor	For connect Raindrop Sensor if needed

## 6. Function Introduce

Power on	Power on, and the LED indicator will flash until the LED is always on, indicating that everything is ok.
Remote control	<p>Code: Giant Rolling Code</p> <p>4 Buttons:</p> <p>The first button for opening</p> <p>The second button for closing</p> <p>The third button for stopping</p> <p>The fourth button has no function</p> <p>Please Note: Support up to 15 remote controls.</p> 
Program remote into the receiver (Learning Code)	<p>Press and hold the first button on the remote while pressing the learning button on the receiver, and the receiver's LED indicator will turn off and enter programming mode. When the receiver LED indicator flashes twice, the programming operation was successful.</p> <p>If the receiver does not receive a signal from the remote within 5 seconds, it will light up and exit programming mode.</p>
Clear code from the receiver	Press and hold the learning button for about 5 seconds, the LED indicator will flash, indicating that all remotes have been cleared from the receiver.
Automatically adjust the motor speed	The motor can start at low speed, run at high speed, run at low speed, and stop.
Limit Switch Resistance Functions	<p>An obstacle encountered: If the motor encounters an obstacle during running, the motor will stop. When the window is fully opened or closed, the motor will stop.</p> <p>Please Note: No limit switch required.</p>



### Please Note !

After installing the window opener, please kindly test it.

Please kindly make sure:

1. Press the first button on the remote and the window will open. Press the second button on the remote and the window closes. If not, adjust the motor wiring.



## 6. Attentions For General Application

- 6.1 Before installation, please feel free to reach us for technical assistance. Discuss your mechanism with us to make the window opener work better on your applications.
- 6.2 Please **MUST** check the facilities or mechanism is functioning before installing the window opener on them.
- 6.3 To maximize the utility of the window opener, please choose Right Window Opener for your applications.
- 6.4 Products Installation and related Wiring **MUST** undertake by trained, qualified, and experience **ELECTRICIANS**.
- 6.5 Please provide the correct **POWER SUPPLY** for the window opener. The suggested **INPUT VOLTAGE** is 12 VDC.
- 6.6 **DO NOT OVERLOAD** the window opener. The suggested Max. Loading/ **THE MOMENT OF A FORCE** for each PKM-C01C window opener is less than 50 kg.
- 6.7 PKM-C01B does not require limit switches.
- 6.8 Be sure the Electricity Supply is **OFF** when undertaking installation or maintenance.
- 6.9 Inspect and Maintenance must be done every 6-month. Recommend **CHECK POINTS**:
  - 6.9.1 All Wiring is fastened and no corrosion.
  - 6.9.2 Mounting Brackets and Screws are still fastened firmly on the mechanism or window frames.
  - 6.9.3 The Mechanism or Window Frames were not Distorted.
  - 6.9.4 There should not be any obstacle or dust bunnies on the hinge.
  - 6.9.5 If there is any defect, change the components before the next operation.
  - 6.9.6 We strongly suggest using the **COMPONENTS** which providing by **GIANT** to ensure your mechanism or Automatic Window Opening System works soundly.
- 6.10 **◆ Beware of Crushing or Clamping** on human or any obstacles when the windows are going to close.
- 6.11 **◆ Automatic Window Opening System** must be Planned and Installed by Trained and Experienced Engineer.
- 6.13 **◆ For better performance and a longer lifespan**, we suggest using **GIANT Window Opener** with Our Window Opener Receiver and Mounting Brackets.

Notes **◆** are specially for Automatic Window Opening Systems.