

GARAGE DOOR SAFETY SENSOR INSTALLATION

HW-10 Safety Sensor Kit, Compatible With Liftmaster/Sears/Chamberlain/Craftsman Garage Door Operators Made After 1997

Package Includes:

- 2 safety sensors (with attached wires)---Receiving sensor × 1 (with a green LED), Sending sensor × 1 (with a yellow LED)
- Some hardware---Wire connectors × 4, Wing nut × 2
- Detailed installation instructions × 1

WARNING

To prevent **SERIOUS INJURY** or **DEATH**:

- Be sure the power supply is **disconnected** from the garage door opener **BEFORE** installing the safety reversing sensor.
- Correctly connect and align the safety reversing sensor. This required safety device **MUST NOT** be disabled.
- Install the safety reversing sensor so beam is **NO HIGHER** than 6" (15cm) above garage floor.

What you need to **PAY ATTENTION** to when installing:

- The sensor is highly aligned to prevent the receiver from being unable to receive the signal.
- The wires are installed correctly, the white wire is connected to the white wire, and the black wire is connected to the black wire.

NOTE: Due to the appearance upgrade of the product, you may receive red and black wires. The chips of the products are consistent. You only need to pay attention to the red and black wires, then the red wire is connected to the red wire, and the black wire is connected to the black wire.

- Keep the wires clean and don't get rotted, it is best to use the wiring head to install.
- Keep the lens clean to prevent affecting signal transmission and reception.

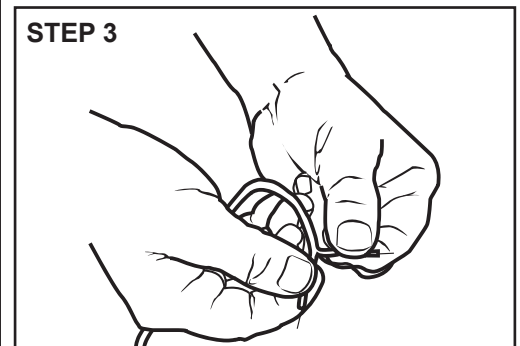
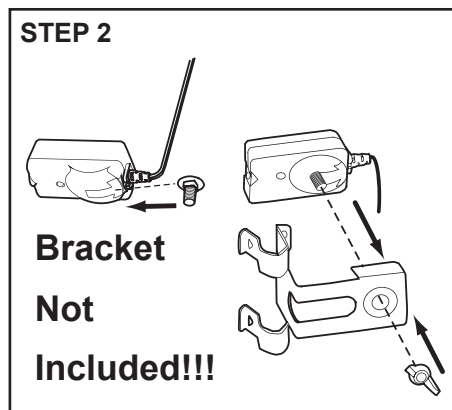
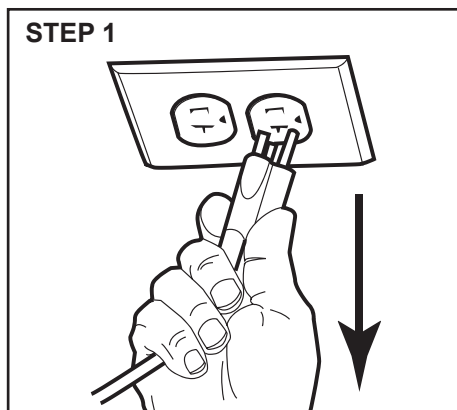
WARNING

This product can expose you to chemicals including lead, which are known to the State of California to cause cancer or birth defects or other reproductive harm.

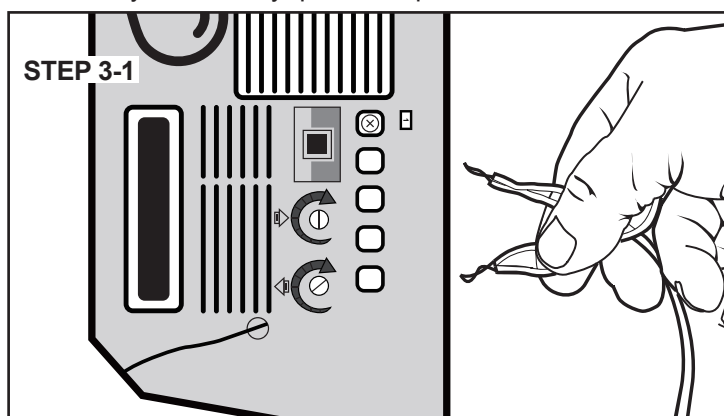
Configuration Guide

STEP 1 : Disconnect power to opener. **STEP 2 :** Install safety sensors.

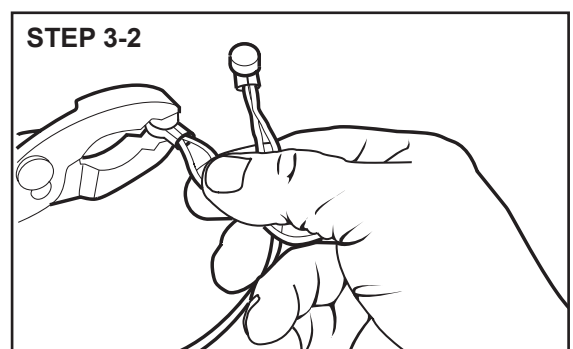
STEP 3 : Separate the insulation at the end of the new sensor wire and the existing wire. Cut exposed wire down to the insulation.



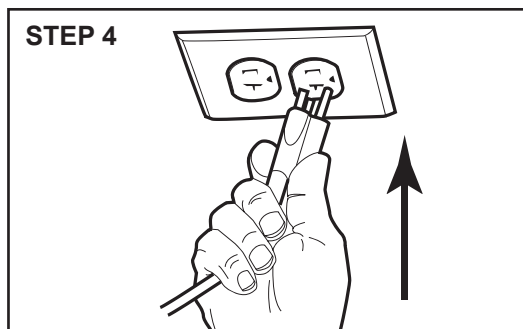
STEP 3-1 : Twist the wires of the same color (strip off the insulation layer) together, such as white with white, black with black (if the wires you received are red and black, then please connect the red wire with the red wire, and the black wire with the black wire). Then plug it into the door opener. Please follow the manual of your door opener for the specific connection method. If you have any questions, please contact us.



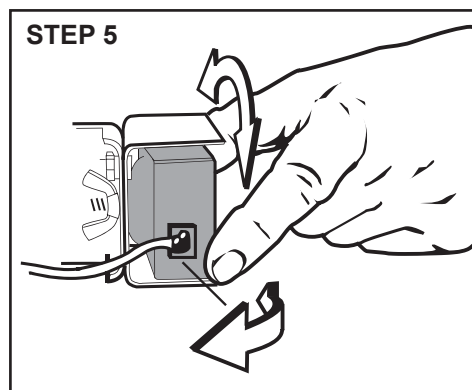
STEP 3-2 : Using the wire connectors (Used to extend the product's wire), insert the new wire with the existing wire by color: black with black, red with white (If your original wires are black and white)---Our products may have two colors of wire, one is black and white, and the other is black and red. Among them, black is used in the same way as black, and red is used in the same way as white. Insert the wire all the way into the connector; once crimped, the connector cannot be re-used. With adjustable pliers, firmly crimp the connector.



STEP 4 : Reconnect power to opener. The indicator lights in both safety sensors will glow steadily if wiring connections and alignment are correct. If the indicator light is off in the receiving eye and the invisible light beam between the sensors is not obstructed, alignment is required.



STEP 5 : Loosen the receiving sensor wing nut to allow slight rotation of safety sensor. Adjust sensor until both indicator lights are glowing steadily. Tighten the wing nut in the receiving eye sensor.



TROUBLESHOOTING

If the sending eye indicator light does not glow steadily after installation, check for :

- Electric power to the opener.
- A short in the wires. These can occur at the staples or at the opener connections.
- A broken wire. If sending eye indicator light glows steadily but receiving eye indicator light does not.
- Incorrect wiring between sensors and opener.
- Keep both sensors highly aligned.
- Check for an open wire to the receiving eye.

After installation, test the Protector System and the Safety Reverse System. See instructions on next section or in your owners manual.



WARNING

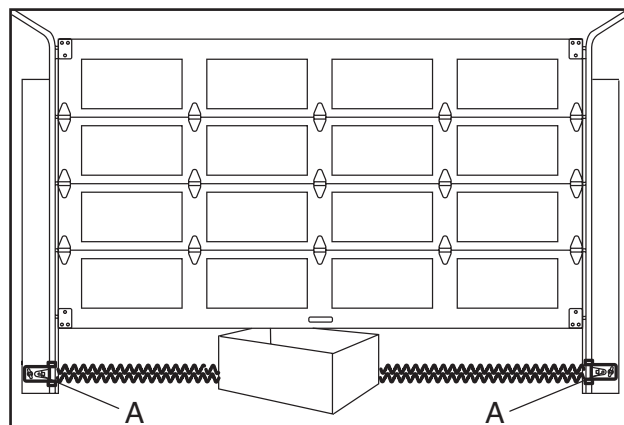
Without a properly installed safety reversing sensor, persons (particularly small children) could be **SERIOUSLY INJURED** or **KILLED** by a closing garage door.

STEP 6 : Test the Protector System

- Press the remote control push button to open the door.
- Place the opener carton in the path of the door.
- Press the remote control push button to close the door.
The door will not move more than an inch (2.5 cm), and the opener lights will flash.

The garage door opener will not close from a remote if the indicator light in either sensor (A) is off (alerting you to the fact that the sensor is misaligned or obstructed).

If the opener closes the door when the safety reversing sensor is obstructed (and the sensors are no more than 6" (15 cm) above the floor), call for a trained door systems technician.



WARNING

- Safety reversal system **MUST** be tested every month.
- If one control (force or travel limits) is adjusted, the other control may also need adjustment.
- After **ANY** adjustments are made, the safety reversal system **MUST** be tested.
Door **MUST** reverse on contact with 1-1/2" high (3.8 cm) object (or 2x4 laid flat) on the floor.

STEP 7 : Test the Safety Reversal System

TEST

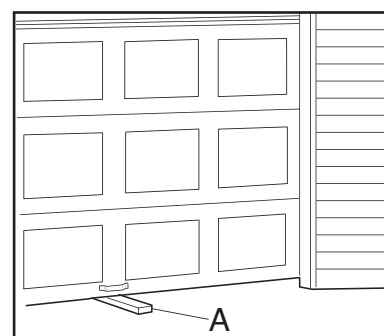
- With the door fully open, place a 1-1/2" (3.8 cm) board (A) (or a 2x4 laid flat) on the floor, centered under the garage door.
- Operate the door in the down direction. The door must reverse on striking the v obstruction.

ADJUST

- If the door is resting on an obstacle, it is not moving down far enough. You can increase the lower limit by turning the lower limit adjusting screw 1/4 turn counterclockwise.

NOTE: On a sectional door, make sure limit adjustments do not force the door arm beyond a straight up and down position.

- Repeat the test.
- When the door reverses on the 1-1/2" (3.8 cm) board, remove the obstruction and run the opener through 3 or 4 complete travel cycles to test adjustment. If the unit continues to fail the Safety Reverse Test, call for a trained door systems technician.



Warranty

This product carries a one-year manufactures warranty. If you have any questions about the product, please contact us for help. Email: smart02@x-house.net